

SAR1A Antibody



PACO44797

Product Information

Size:

50ul

Reactivity:

Human, Mouse

Source:

Rabbit

Isotype:

IgG

Applications:

ELISA, WB, IHC

Recommended dilutions:

ELISA:1:2000-1:10000, WB:1:1000-1:5000,
IHC:1:20-1:200

Protein Background:

Involved in transport from the endoplasmic reticulum to the Golgi apparatus. Required to maintain SEC16A localization at discrete locations on the ER membrane perhaps by preventing its dissociation. SAR1A-GTP-dependent assembly of SEC16A on the ER membrane forms an organized scaffold defining endoplasmic reticulum exit sites (ERES).

Gene ID:

SAR1A

Uniprot

Q9NR31

Synonyms:

GTP-binding protein SAR1a (COPII-associated small GTPase), SAR1A, SAR1 SARA SARA1

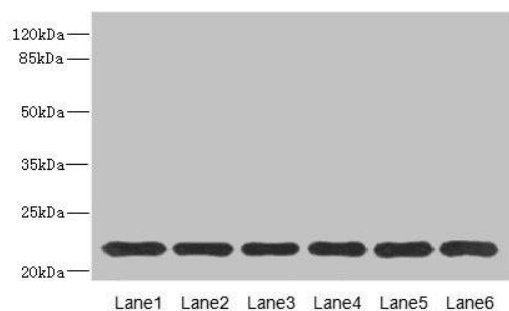
Immunogen:

Recombinant Human GTP-binding protein SAR1a protein (1-198AA).

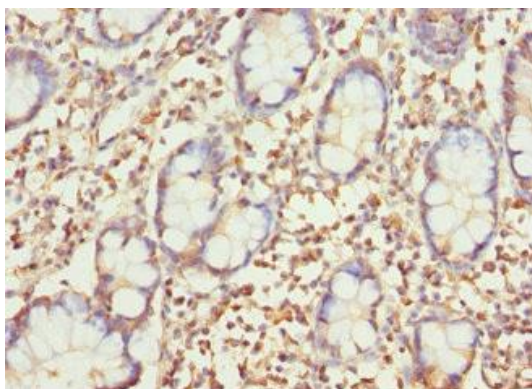
Storage:

PBS with 0.02% sodium azide, 50% glycerol, pH7.3.

Product Images



Western blot. All lanes: SAR1A antibody at 4.57 μ g/ml. Lane 1: Mouse lung tissue. Lane 2: NIH/3T3 whole cell lysate. Lane 3: A431 whole cell lysate. Lane 4: MCF-7 whole cell lysate. Lane 5: Jurkat whole cell lysate. Lane 6: HepG2 whole cell lysate. Secondary: Goat polyclonal to rabbit IgG at 1/10000 dilution. Predicted band size: 23, 18 kDa. Observed band size: 23 kDa.



Immunohistochemistry of paraffin-embedded human small intestine tissue using PACO44797 at dilution of 1:100.