

RUFY1 Antibody



PACO44796

Product Information

Size:

50ul

Reactivity:

Human, Mouse

Source:

Rabbit

Isotype:

IgG

Applications:

ELISA, WB, IHC

Recommended dilutions:

ELISA:1:2000-1:10000, WB:1:1000-1:5000,
IHC:1:20-1:200

Protein Background:

Binds phospholipid vesicles containing phosphatidylinositol 3-phosphate and participates in early endosomal trafficking.

Gene ID:

RUFY1

Uniprot

Q96T51

Synonyms:

RUN and FYVE domain-containing protein 1 (FYVE-finger protein EIP1) (La-binding protein 1) (Rab4-interacting protein) (Zinc finger FYVE domain-containing protein 12), RUFY1, RABIP4 ZFYVE12

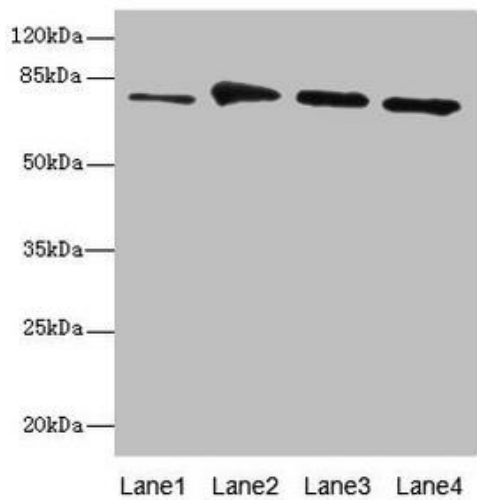
Immunogen:

Recombinant Human RUN and FYVE domain-containing protein 1 protein (439-708AA).

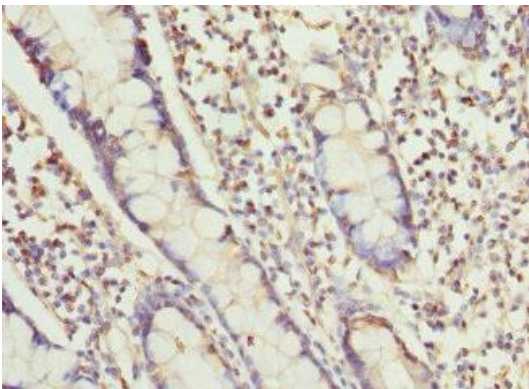
Storage:

PBS with 0.02% sodium azide, 50% glycerol, pH7.3.

Product Images



Western blot. All lanes: RUFY1 antibody at 7.54 μ g/ml. Lane 1: Mouse kidney tissue. Lane 2: Mouse heart tissue. Lane 3: Mouse lung tissue. Lane 4: Mouse gonadal tissue. Secondary: Goat polyclonal to rabbit IgG at 1/10000 dilution. Predicted band size: 80, 70, 45 kDa. Observed band size: 80 kDa.



Immunohistochemistry of paraffin-embedded human small intestine tissue using PACO44796 at dilution of 1:100.