

PRICKLE2 Antibody



PACO44789

Product Information

Size:

50ul

Reactivity:

Human

Source:

Rabbit

Isotype:

IgG

Applications:

ELISA, IHC

Recommended dilutions:

ELISA:1:2000-1:10000, IHC:1:20-1:200

Protein Background:

cytoplasm, Wnt signaling pathway, planar cell polarity pathway.

Gene ID:

PRICKLE2

Uniprot

Q7Z3G6

Synonyms:

Prickle-like protein 2, PRICKLE2

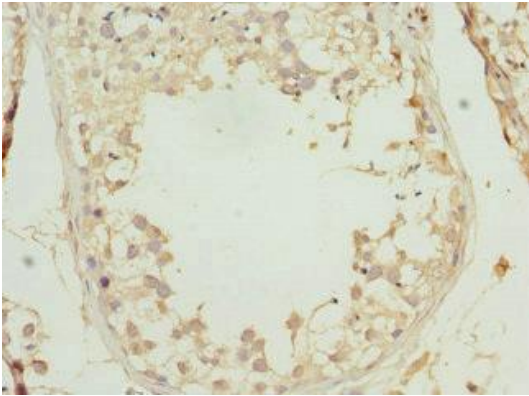
Immunogen:

Recombinant Human Prickle-like protein 2 protein (615-844AA).

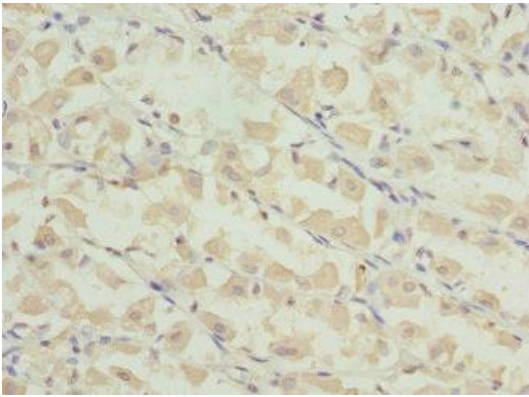
Storage:

PBS with 0.02% sodium azide, 50% glycerol, pH7.3.

Product Images



Immunohistochemistry of paraffin-embedded human testis tissue using PACO44789 at dilution of 1:100.



Immunohistochemistry of paraffin-embedded human gastric cancer using PACO44789 at dilution of 1:100.