

# PPP3R2 Antibody



PACO44788

---

## Product Information

**Size:**

50ul

**Reactivity:**

Human, Mouse

**Source:**

Rabbit

**Isotype:**

IgG

**Applications:**

ELISA, WB, IHC

**Recommended dilutions:**

ELISA:1:2000-1:10000, WB:1:1000-1:5000,  
IHC:1:20-1:200

**Protein Background:**

Regulatory subunit of calcineurin, a calcium-dependent, calmodulin stimulated protein phosphatase. Confers calcium sensitivity.

**Gene ID:**

PPP3R2

**Uniprot**

Q96LZ3

**Synonyms:**

Calcineurin subunit B type 2 (Calcineurin B-like protein) (CBLP) (Calcineurin BII) (CNBII) (PPP3R1-like) (Protein phosphatase 2B regulatory subunit 2) (Protein phosphatase 3 regulatory subunit B beta isoform), PPP3R2, CBLP PPP3RL

**Immunogen:**

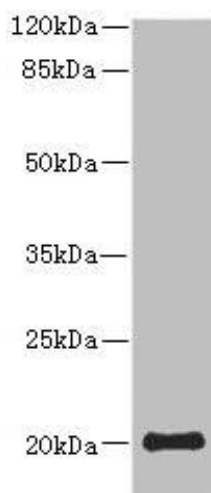
Recombinant Human Calcineurin subunit B type 2 protein (1-170AA).

**Storage:**

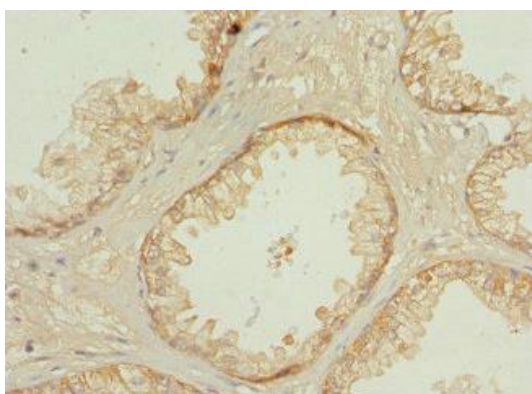
PBS with 0.02% sodium azide, 50% glycerol, pH7.3.

## Product Images

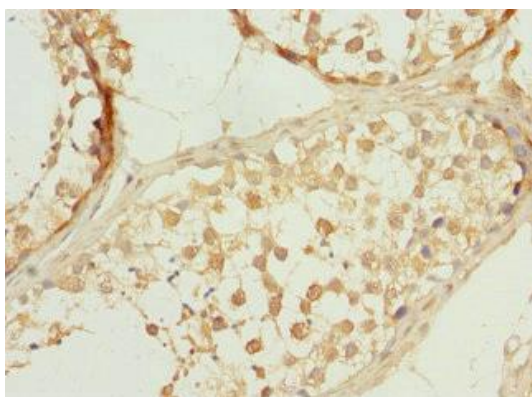
---



Western blot. All lanes: PPP3R2 antibody at 9.25 $\mu$ g/ml + Mouse brain tissue. Secondary. Goat polyclonal to rabbit IgG at 1/10000 dilution. Predicted band size: 20 kDa. Observed band size: 20 kDa.



Immunohistochemistry of paraffin-embedded human prostate cancer using PACO44788 at dilution of 1:100.



Immunohistochemistry of paraffin-embedded human testis tissue using PACO44788 at dilution of 1:100.