

Product Information

Size:

50ul

Reactivity:

Human

Source:

Rabbit

Isotype:

IgG

Applications:

ELISA, IHC

Recommended dilutions:

ELISA:1:2000-1:10000, IHC:1:20-1:200

Protein Background:

Participates in the biosynthesis of phosphatidylinositol 4,5-bisphosphate. Mediates RAC1-dependent reorganization of actin filaments. Contributes to the activation of PLD2. Together with PIP5K1A is required after stimulation of G-protein coupled receptors for stable platelet adhesion.

Gene ID:

PIP5K1B

Uniprot

O14986

Synonyms:

Phosphatidylinositol 4-phosphate 5-kinase type-1 beta (PIP5K1-beta) (PtdIns(4)P-5-kinase 1 beta) (EC 2.7.1.68) (Phosphatidylinositol 4-phosphate 5-kinase type I beta) (PIP5KIbeta) (Protein STM-7) (Type I phosphatidylinositol 4-phosphate 5-kinase beta), PIP5K1B, STM7

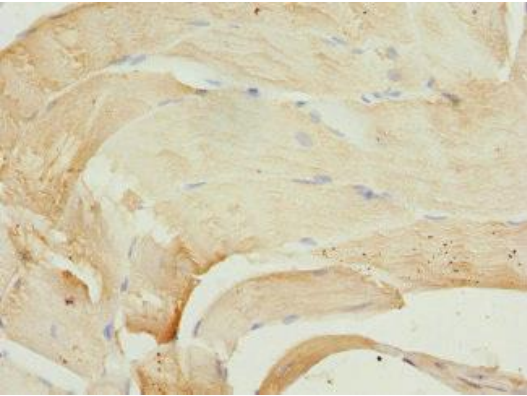
Immunogen:

Recombinant Human Phosphatidylinositol 4-phosphate 5-kinase type-1 β protein (190-470AA).

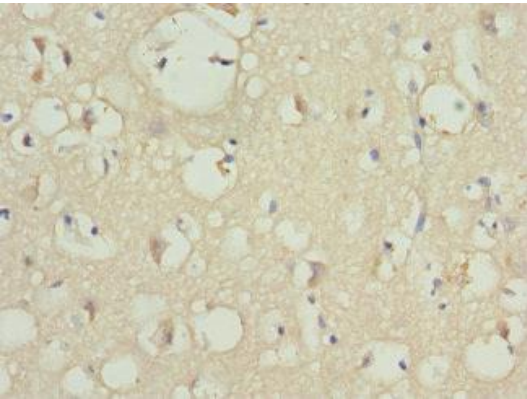
Storage:

PBS with 0.02% sodium azide, 50% glycerol, pH7.3.

Product Images



Immunohistochemistry of paraffin-embedded human skeletal muscle tissue using PACO44785 at dilution of 1:100.



Immunohistochemistry of paraffin-embedded human brain tissue using PACO44785 at dilution of 1:100.