

## Product Information

**Size:**

50ul

**Reactivity:**

Human

**Source:**

Rabbit

**Isotype:**

IgG

**Applications:**

ELISA, WB, IHC

**Recommended dilutions:**

ELISA:1:2000-1:10000, WB:1:1000-1:5000,  
IHC:1:20-1:200

**Protein Background:**

Catalytic subunit of the phosphorylase b kinase (PHK), which mediates the neural and hormonal regulation of glycogen breakdown (glycogenolysis) by phosphorylating and thereby activating glycogen phosphorylase. May regulate glycogeneolysis in the testis. In vitro, phosphorylates PYGM.

**Gene ID:**

PHKG2

**Uniprot**

P15735

**Synonyms:**

Phosphorylase b kinase gamma catalytic chain, liver/testis isoform (PHK-gamma-LT) (PHK-gamma-T) (EC 2.7.11.19) (PSK-C3) (Phosphorylase kinase subunit gamma-2), PHKG2

**Immunogen:**

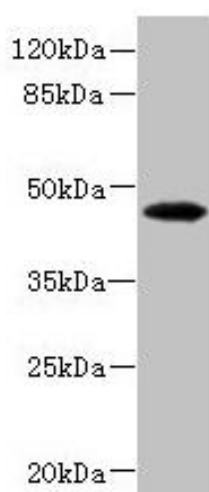
Recombinant Human Phosphorylase b kinase &gamma; catalytic chain, liver/testis isoform protein (237-406AA).

**Storage:**

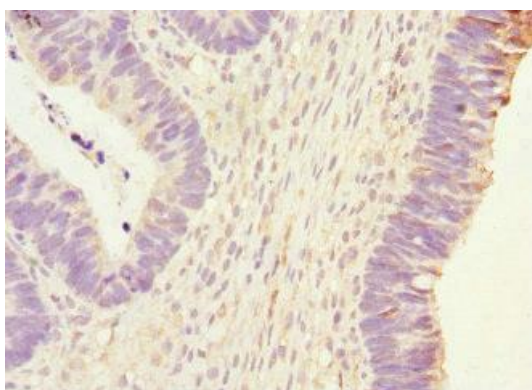
PBS with 0.02% sodium azide, 50% glycerol, pH7.3.

## Product Images

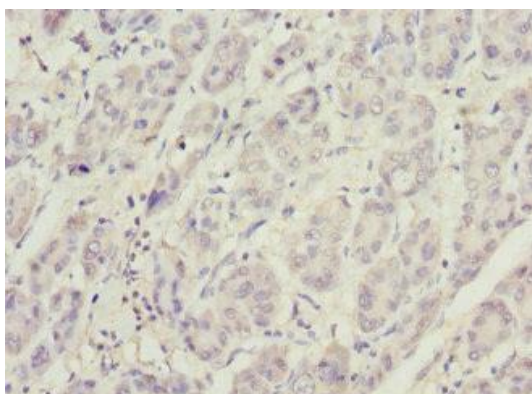
---



Western blot. All lanes: PHKG2 antibody at 3.4 $\mu$ g/ml + HepG2 whole cell lysate. Secondary. Goat polyclonal to rabbit IgG at 1/10000 dilution. Predicted band size: 47, 44 kDa. Observed band size: 47 kDa.



Immunohistochemistry of paraffin-embedded human ovarian cancer using PACO44781 at dilution of 1:100.



Immunohistochemistry of paraffin-embedded human liver cancer using PACO44781 at dilution of 1:100.