

# MAP4K5 Antibody



PACO44776

---

## Product Information

**Size:**

50ul

**Reactivity:**

Human

**Source:**

Rabbit

**Isotype:**

IgG

**Applications:**

ELISA, IHC

**Recommended dilutions:**

ELISA:1:2000-1:10000, IHC:1:20-1:200

**Protein Background:**

May play a role in the response to environmental stress. Appears to act upstream of the JUN N-terminal pathway.

**Gene ID:**

MAP4K5

**Uniprot**

Q9Y4K4

**Synonyms:**

Mitogen-activated protein kinase kinase kinase kinase 5 (EC 2.7.11.1) (Kinase homologous to SPS1/STE20) (KHS) (MAPK/ERK kinase kinase kinase 5) (MEK kinase kinase 5) (MEKKK 5), MAP4K5

**Immunogen:**

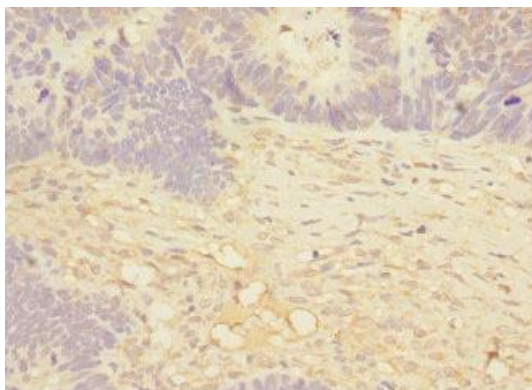
Recombinant Human Mitogen-activated protein kinase kinase kinase kinase 5 protein (300-480AA).

**Storage:**

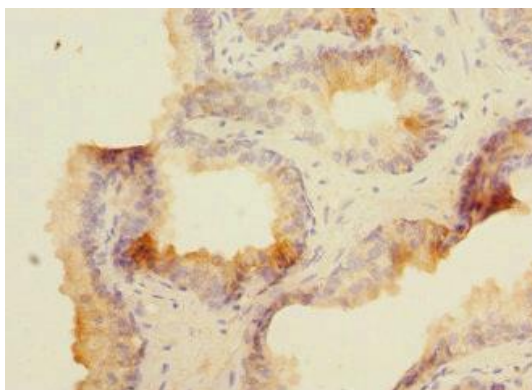
PBS with 0.02% sodium azide, 50% glycerol, pH7.3.

## Product Images

---



Immunohistochemistry of paraffin-embedded human ovarian cancer using PACO44776 at dilution of 1:100.



Immunohistochemistry of paraffin-embedded human prostate cancer using PACO44776 at dilution of 1:100.