

PACO44770

Product Information

Size:

50ul

Reactivity:

Human

Source:

Rabbit

Isotype:

IgG

Applications:

ELISA, WB, IHC

Recommended dilutions:

ELISA:1:2000-1:10000, WB:1:1000-1:5000,
IHC:1:20-1:200

Protein Background:

Inhibins and activins inhibit and activate, respectively, the secretion of follitropin by the pituitary gland. Inhibins/activins are involved in regulating a number of diverse functions such as hypothalamic and pituitary hormone secretion, gonadal hormone secretion, germ cell development and maturation, erythroid differentiation, insulin secretion, nerve cell survival, embryonic axial development or bone growth, depending on their subunit composition. Inhibins appear to oppose the functions of activins.

Gene ID:

INHBC

Uniprot

P55103

Synonyms:

Inhibin beta C chain (Activin beta-C chain), INHBC

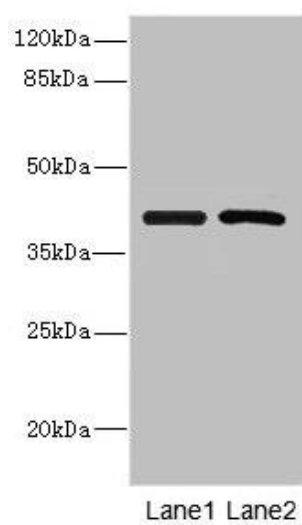
Immunogen:

Recombinant Human Inhibin β C chain protein (103-352AA).

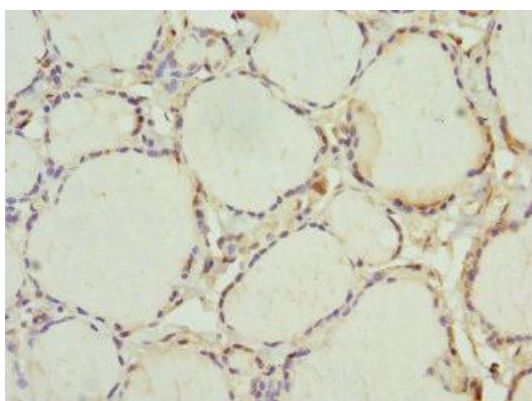
Storage:

PBS with 0.02% sodium azide, 50% glycerol, pH7.3.

Product Images



Western blot. All lanes: INHBC antibody at 5.16 μ g/ml. Lane 1: HeLa whole cell lysate. Lane 2: A549 whole cell lysate. Secondary. Goat polyclonal to rabbit IgG at 1/10000 dilution. Predicted band size: 38 kDa. Observed band size: 38 kDa.



Immunohistochemistry of paraffin-embedded human thyroid tissue using PACO44770 at dilution of 1:100.