

GPR68 Antibody



PACO44767

Product Information

Size:

50ul

Reactivity:

Human

Source:

Rabbit

Isotype:

IgG

Applications:

ELISA, IHC

Recommended dilutions:

ELISA:1:2000-1:10000, IHC:1:20-1:200

Protein Background:

Proton-sensing receptor involved in pH homeostasis. May represents an osteoblastic pH sensor regulating cell-mediated responses to acid, sis in bone. Mediates its action by association with G proteins that stimulates inositol phosphate (IP) production or Ca(2+) mobilization. The receptor is almost silent at pH 7.8 but fully activated at pH 6.8. Function also as a metastasis suppressor gene in prostate cancer.

Gene ID:

GPR68

Uniprot

Q15743

Synonyms:

Ovarian cancer G-protein coupled receptor 1 (OGR-1) (G-protein coupled receptor 68) (GPR12A) (Sphingosylphosphorylcholine receptor), GPR68, OGR1

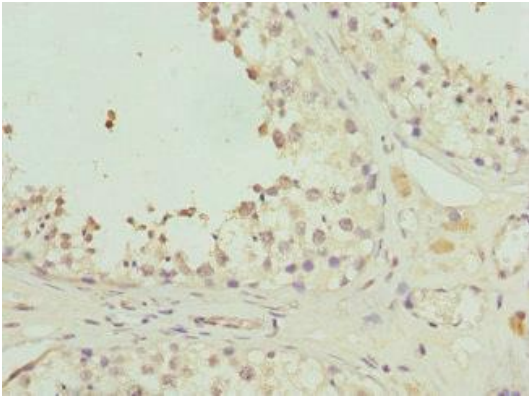
Immunogen:

Recombinant Human Ovarian cancer G-protein coupled receptor 1 protein (276-365AA).

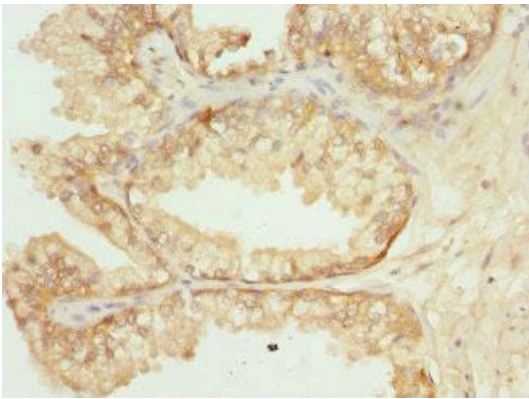
Storage:

PBS with 0.02% sodium azide, 50% glycerol, pH7.3.

Product Images



Immunohistochemistry of paraffin-embedded human testis tissue using PACO44767 at dilution of 1:100.



Immunohistochemistry of paraffin-embedded human prostate cancer using PACO44767 at dilution of 1:100.