

Product Information

Size:

50ul

Reactivity:

Human, Mouse

Source:

Rabbit

Isotype:

IgG

Applications:

ELISA, WB, IHC, IP

Recommended dilutions:

ELISA:1:2000-1:10000, WB:1:1000-1:5000,
IHC:1:20-1:200, IP:1:200-1:2000

Protein Background:

Serine/threonine-protein kinase. Casein kinases are operationally defined by their preferential utilization of acid, c proteins such as caseins as substrates. It can phosphorylate a large number of proteins. Participates in Wnt signaling. Phosphorylates COL4A3BP/CERT, MTA1 and SMAD3. Involved in brain development and vesicular trafficking and neurotransmitter releasing from small synaptic vesicles. Regulates fast synaptic transmission mediated by glutamate. SMAD3 phosphorylation promotes its ligand-dependent ubiquitination and subsequent proteasome degradation, thus inhibiting SMAD3-mediated TGF-beta responses. Hyperphosphorylation of the serine-repeat motif of COL4A3BP/CERT leads to its inactivation by dissociation from the Golgi complex, thus down-regulating ER-to-Golgi transport of ceramide and sphingomyelin synthesis. Triggers PER1 proteasomal degradation probably through phosphorylation.

Gene ID:

CSNK1G2

Uniprot

P78368

Synonyms:

Casein kinase I isoform gamma-2 (CKI-gamma 2) (EC 2.7.11.1), CSNK1G2, CK1G2

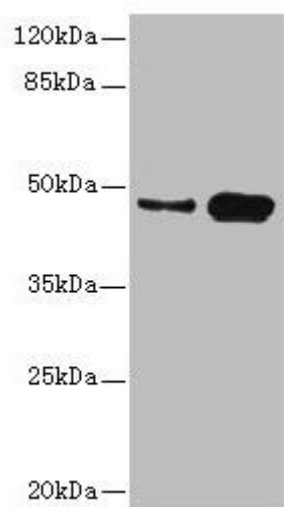
Immunogen:

Recombinant Human Casein kinase I isoform gamma-2 protein (316-415AA).

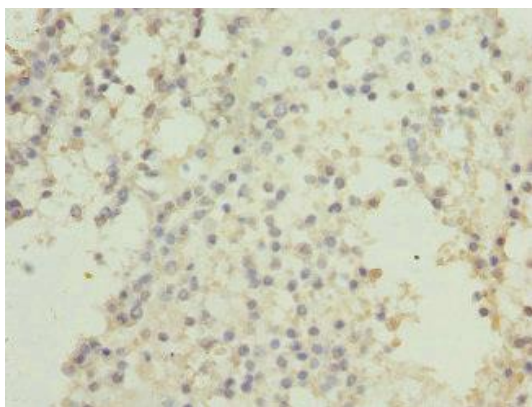
Storage:

PBS with 0.02% sodium azide, 50% glycerol, pH7.3.

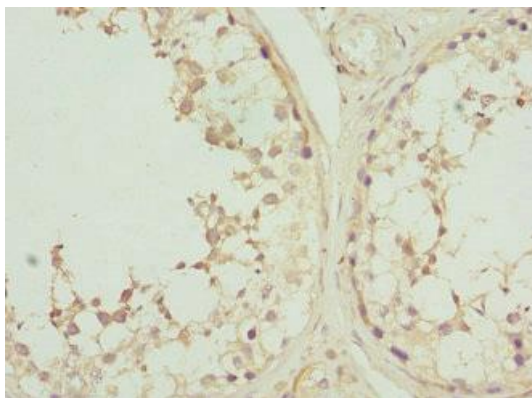
Product Images



Western blot. All lanes: CSNK1G2 antibody at 4.21 μ g/ml. Lane 1: Mouse gonadal tissue. Lane 2: Hela whole cell lysate. Secondary. Goat polyclonal to rabbit IgG at 1/10000 dilution. Predicted band size: 47 kDa. Observed band size: 47 kDa.



Immunohistochemistry of paraffin-embedded human breast cancer using PACO44755 at dilution of 1:100.



Immunohistochemistry of paraffin-embedded human testis tissue using PACO44755 at dilution of 1:100.