

PACO44754

---

## Product Information

**Size:**

50ul

**Reactivity:**

Human

**Source:**

Rabbit

**Isotype:**

IgG

**Applications:**

ELISA, WB, IHC

**Recommended dilutions:**

ELISA:1:2000-1:10000, WB:1:1000-1:5000,  
IHC:1:20-1:200

**Protein Background:**

Serine/threonine-protein kinase. Casein kinases are operationally defined by their preferential utilization of acid, c proteins such as caseins as substrates. It can phosphorylate a large number of proteins. Participates in Wnt signaling. Regulates fast synaptic transmission mediated by glutamate. Phosphorylates CLSPN.

**Gene ID:**

CSNK1G1

**Uniprot**

Q9HCP0

**Synonyms:**

Casein kinase I isoform gamma-1 (CKI-gamma 1) (EC 2.7.11.1), CSNK1G1

**Immunogen:**

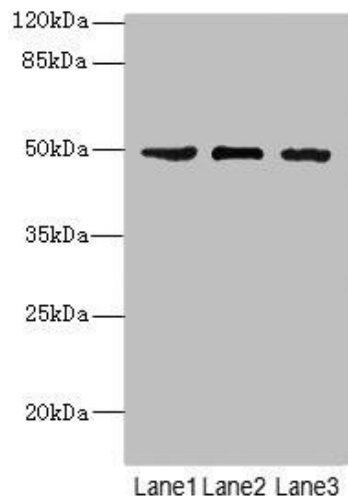
Recombinant Human Casein kinase I isoform gamma-1 protein (298-422AA).

**Storage:**

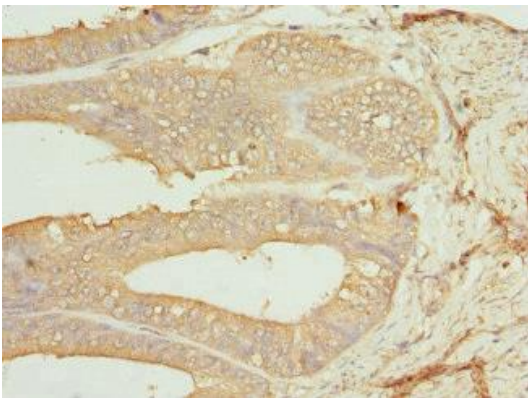
PBS with 0.02% sodium azide, 50% glycerol, pH7.3.

## Product Images

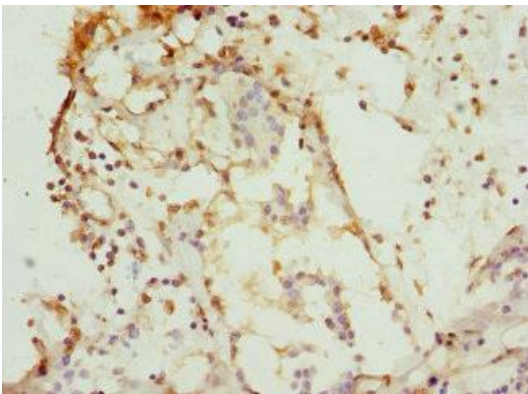
---



Western blot. All lanes: CSNK1G1 antibody at 1.13 $\mu$ g/ml. Lane 1: Jurkat whole cell lysate. Lane 2: HeLa whole cell lysate. Lane 3: MCF-7 whole cell lysate. Secondary: Goat polyclonal to rabbit IgG at 1/10000 dilution. Predicted band size: 49, 46 kDa. Observed band size: 49 kDa.



Immunohistochemistry of paraffin-embedded human endometrial cancer using PACO44754 at dilution of 1:100.



Immunohistochemistry of paraffin-embedded human breast cancer using PACO44754 at dilution of 1:100.