

PACO44751

Product Information

Size:

50ul

Reactivity:

Human

Source:

Rabbit

Isotype:

IgG

Applications:

ELISA, IHC

Recommended dilutions:

ELISA:1:2000-1:10000, IHC:1:20-1:200

Protein Background:

Plays a role in the microtubule-dependent coupling of the nucleus and the centrosome. Involved in the processes that regulate centrosome-mediated interkinetic nuclear migration (INM) of neural progenitors and for proper positioning of neurons during brain development. Also implicated in the migration and selfrenewal of neural progenitors. Required for centriole duplication and maturation during mitosis and subsequent ciliogenesis.

Gene ID:

CEP120

Uniprot

Q8N960

Synonyms:

Centrosomal protein of 120 kDa (Cep120) (Coiled-coil domain-containing protein 100), CEP120, CCDC100

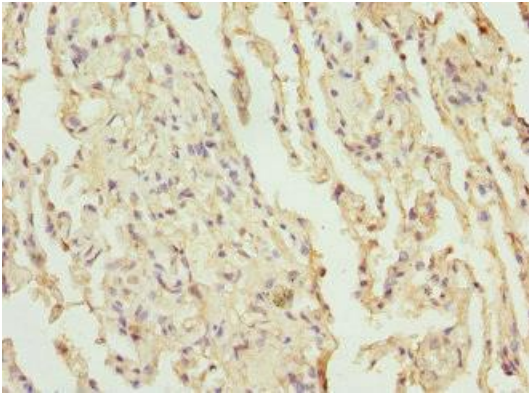
Immunogen:

Recombinant Human Centrosomal protein of 120 kDa protein (1-270AA).

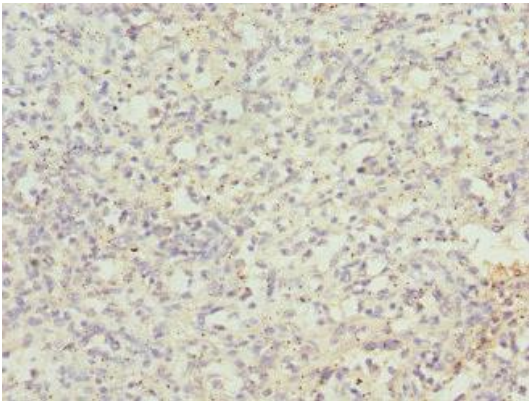
Storage:

PBS with 0.02% sodium azide, 50% glycerol, pH7.3.

Product Images



Immunohistochemistry of paraffin-embedded human lung tissue using PACO44751 at dilution of 1:100.



Immunohistochemistry of paraffin-embedded human spleen tissue using PACO44751 at dilution of 1:100.