

ZFYVE1 Antibody



PACO44731

Product Information

Size:

50ul

Reactivity:

Human, Mouse

Source:

Rabbit

Isotype:

IgG

Applications:

ELISA, WB, IHC

Recommended dilutions:

ELISA:1:2000-1:10000, WB:1:1000-1:5000,
IHC:1:20-1:200

Protein Background:

autophagosome, endoplasmic reticulum, ER-mitochondrion membrane contact site, extrinsic component of omegasome membrane, Golgi stack, perinuclear region of cytoplasm, pre-autophagosomal structure, 1-phosphatidylinositol binding, phosphatidylinositol-3,4,5-trisphosphate binding, phosphatidylinositol-3,4-bisphosphate binding.

Gene ID:

ZFYVE1

Uniprot

Q9HBF4

Synonyms:

Zinc finger FYVE domain-containing protein 1 (Double FYVE-containing protein 1) (SR3) (Tandem FYVE fingers-1), ZFYVE1, DFCEP1 KIAA1589 TAFF1 ZNFN2A1

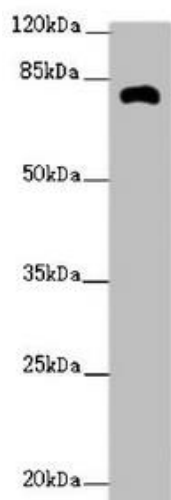
Immunogen:

Recombinant Human Zinc finger FYVE domain-containing protein 1 protein (1-280AA).

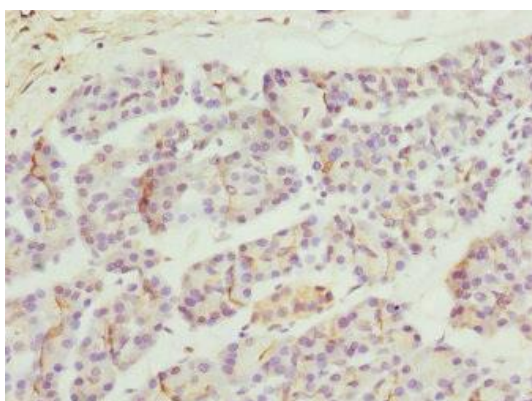
Storage:

PBS with 0.02% sodium azide, 50% glycerol, pH7.3.

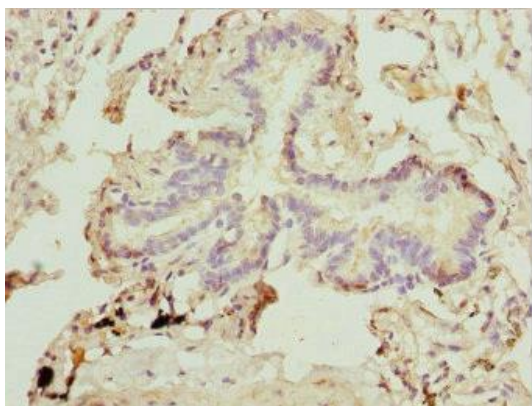
Product Images



Western blot. All lanes: ZFYVE1 antibody at 2.62 μ g/ml + Mouse kidney tissue. Secondary. Goat polyclonal to rabbit IgG at 1/10000 dilution. Predicted band size: 88, 41, 86 kDa. Observed band size: 81 kDa.



Immunohistochemistry of paraffin-embedded human pancreatic tissue using PACO44731 at dilution of 1:100.



Immunohistochemistry of paraffin-embedded human lung tissue using PACO44731 at dilution of 1:100.