

SH3GL1 Antibody



PACO44690

Product Information

Size:

50ul

Reactivity:

Human

Source:

Rabbit

Isotype:

IgG

Applications:

ELISA, IHC

Recommended dilutions:

ELISA:1:2000-1:10000, IHC:1:20-1:200

Protein Background:

Implicated in endocytosis. May recruit other proteins to membranes with high curvature.

Gene ID:

SH3GL1

Uniprot

Q99961

Synonyms:

Endophilin-A2 (EEN fusion partner of MLL) (Endophilin-2) (Extra eleven-nineteen leukemia fusion gene protein) (EEN) (SH3 domain protein 2B) (SH3 domain-containing GRB2-like protein 1), SH3GL1, CNSA1 SH3D2B

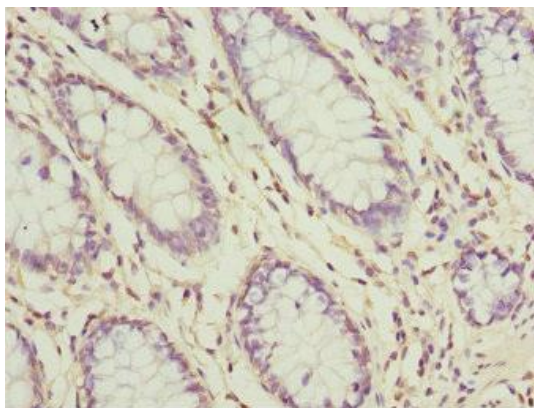
Immunogen:

Recombinant Human Endophilin-A2 protein (219-368AA).

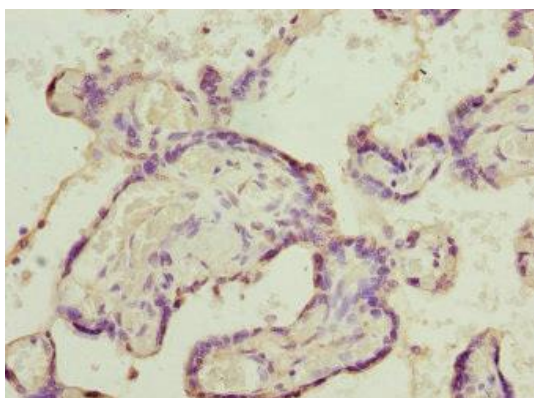
Storage:

PBS with 0.02% sodium azide, 50% glycerol, pH7.3.

Product Images



Immunohistochemistry of paraffin-embedded human colon cancer using PACO44690 at dilution of 1:100.



Immunohistochemistry of paraffin-embedded human placenta tissue using PACO44690 at dilution of 1:100.