

RUFY2 Antibody



PACO44686

Product Information

Size:

50ul

Reactivity:

Human

Source:

Rabbit

Isotype:

IgG

Applications:

ELISA, WB, IHC

Recommended dilutions:

ELISA:1:2000-1:10000, WB:1:1000-1:5000,
IHC:1:20-1:200

Protein Background:**Gene ID:**

RUFY2

Uniprot

Q8WXA3

Synonyms:

RUN and FYVE domain-containing protein 2 (Rab4-interacting protein related), RUFY2, KIAA1537 RABIP4R

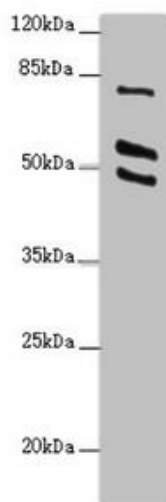
Immunogen:

Recombinant Human RUN and FYVE domain-containing protein 2 protein (396-655AA).

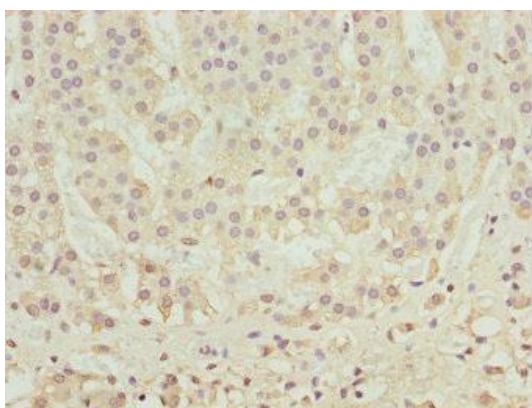
Storage:

PBS with 0.02% sodium azide, 50% glycerol, pH7.3.

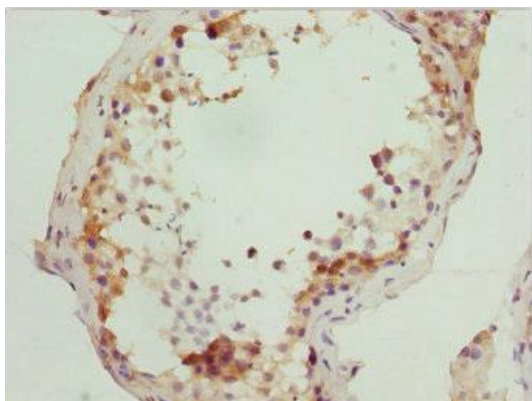
Product Images



Western blot. All lanes: RUFY2 antibody at 2.4 μ g/ml + PC-3 whole cell lysate. Secondary. Goat polyclonal to rabbit IgG at 1/10000 dilution. Predicted band size: 76, 71, 75, 47, 44 kDa. Observed band size: 76, 55, 49 kDa.



Immunohistochemistry of paraffin-embedded human adrenal gland tissue using PACO44686 at dilution of 1:100.



Immunohistochemistry of paraffin-embedded human testis tissue using PACO44686 at dilution of 1:100.