

PACO44684

---

## Product Information

**Size:**

50ul

**Reactivity:**

Human

**Source:**

Rabbit

**Isotype:**

IgG

**Applications:**

ELISA, IHC

**Recommended dilutions:**

ELISA:1:2000-1:10000, IHC:1:20-1:200

**Protein Background:**

Involved in the microtubule organization in interphase cells. Overexpression induces the fragmentation of the Golgi, and causes lysosomes to disperse toward the cell periphery; it also interferes with mitotic spindle assembly. May play a role in ovarian carcinogenesis.

**Gene ID:**

NINL

**Uniprot**

Q9Y2I6

**Synonyms:**

Ninein-like protein, NINL, KIAA0980 NLP

**Immunogen:**

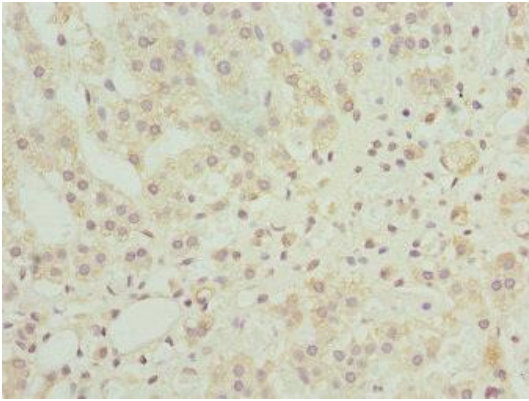
Recombinant Human Ninein-like protein (1-190AA).

**Storage:**

PBS with 0.02% sodium azide, 50% glycerol, pH7.3.

## Product Images

---



Immunohistochemistry of paraffin-embedded human adrenal gland tissue using PACO44684 at dilution of 1:100.