

RAB5B Antibody



PACO44678

Product Information

Size:

50ul

Reactivity:

Human

Source:

Rabbit

Isotype:

IgG

Applications:

ELISA, WB, IHC

Recommended dilutions:

ELISA:1:2000-1:10000, WB:1:1000-1:5000,
IHC:1:20-1:200

Protein Background:

Protein transport. Probably involved in vesicular traffic.

Gene ID:

RAB5B

Uniprot

P61020

Synonyms:

Ras-related protein Rab-5B, RAB5B

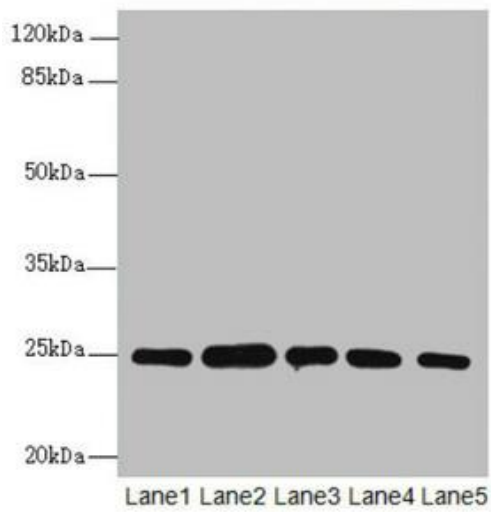
Immunogen:

Recombinant Human Ras-related protein Rab-5B protein (1-215AA).

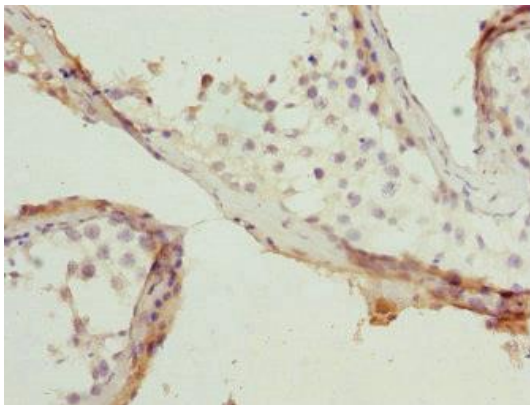
Storage:

PBS with 0.02% sodium azide, 50% glycerol, pH7.3.

Product Images



Western blot. All lanes: RAB5B antibody at 1.66 μ g/ml. Lane 1: A431 whole cell lysate. Lane 2: Hela whole cell lysate. Lane 3: Jurkat whole cell lysate. Lane 4: 293T whole cell lysate. Lane 5: HepG2 whole cell lysate. Secondary. Goat polyclonal to rabbit IgG at 1/10000 dilution. Predicted band size: 24, 20 kDa. Observed band size: 24, 31 kDa.



Immunohistochemistry of paraffin-embedded human testis tissue using PACO44678 at dilution of 1:100.