

NLE1 Antibody



PACO44666

Product Information

Size:

50ul

Reactivity:

Human

Source:

Rabbit

Isotype:

IgG

Applications:

ELISA, WB, IHC

Recommended dilutions:

ELISA:1:2000-1:10000, WB:1:1000-1:5000,
IHC:1:20-1:200

Protein Background:

Plays a role in regulating Notch activity. Plays a role in regulating the expression of CDKN1A and several members of the Wnt pathway, probably via its effects on Notch activity. Required during embryogenesis for inner mass cell survival.

Gene ID:

NLE1

Uniprot

Q9NVX2

Synonyms:

Notchless protein homolog 1, NLE1

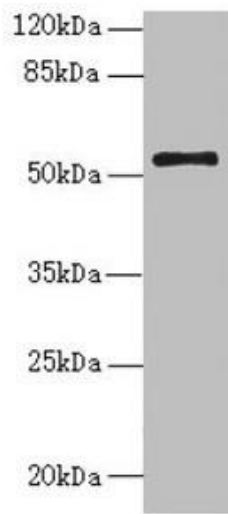
Immunogen:

Recombinant Human Notchless protein homolog 1 protein (206-485AA).

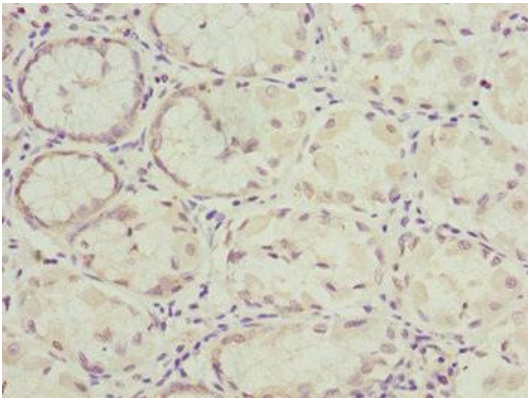
Storage:

PBS with 0.02% sodium azide, 50% glycerol, pH7.3.

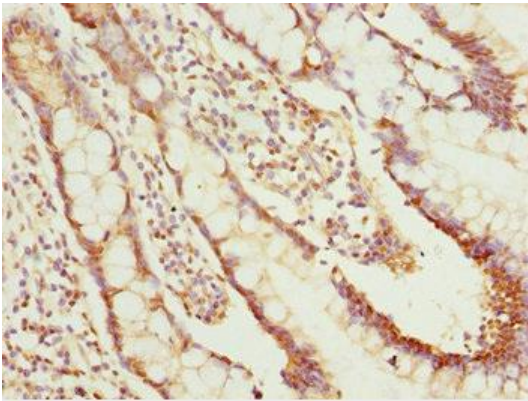
Product Images



Western blot. All lanes: NLE1 antibody at 1.48 μ g/ml + PC-3 whole cell lysate. Secondary. Goat polyclonal to rabbit IgG at 1/10000 dilution. Predicted band size: 54, 22 kDa. Observed band size: 54 kDa.



Immunohistochemistry of paraffin-embedded human gastric cancer using PACO44666 at dilution of 1:100.



Immunohistochemistry of paraffin-embedded human small intestine tissue using PACO44666 at dilution of 1:100.