

KBTBD7 Antibody



PACO44647

Product Information

Size:

50ul

Reactivity:

Human

Source:

Rabbit

Isotype:

IgG

Applications:

ELISA, WB, IHC

Recommended dilutions:

ELISA:1:2000-1:10000, WB:1:1000-1:5000,
IHC:1:20-1:200

Protein Background:

Cul3-RING ubiquitin ligase complex, cytosol, MAPK cascade.

Gene ID:

KBTBD7

Uniprot

Q8WVZ9

Synonyms:

Kelch repeat and BTB domain-containing protein 7, KBTBD7

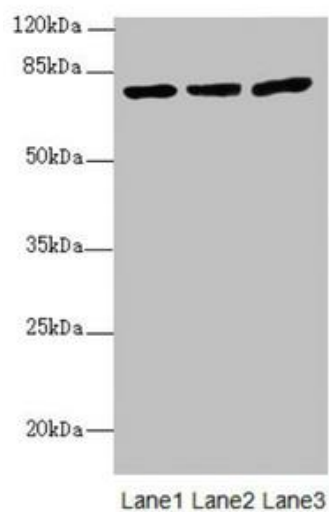
Immunogen:

Recombinant Human Kelch repeat and BTB domain-containing protein 7 protein (475-684AA).

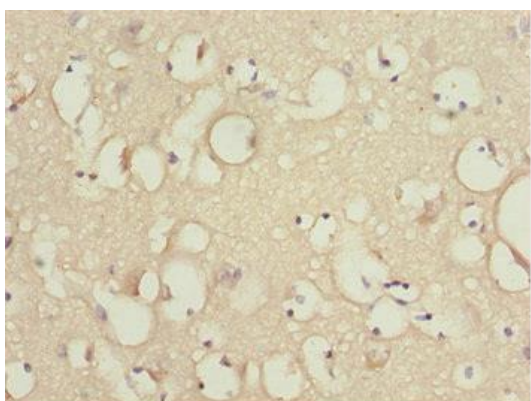
Storage:

PBS with 0.02% sodium azide, 50% glycerol, pH7.3.

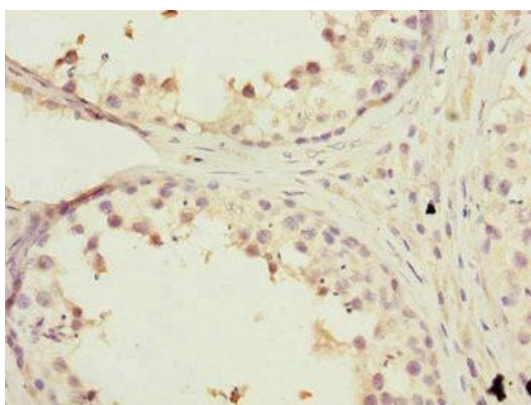
Product Images



Western blot. All lanes: KBTBD7 antibody at 1.85 μ g/ml. Lane 1: HL60 whole cell lysate. Lane 2: A549 whole cell lysate. Lane 3: 293T whole cell lysate. Secondary. Goat polyclonal to rabbit IgG at 1/10000 dilution. Predicted band size: 77 kDa. Observed band size: 77 kDa.



Immunohistochemistry of paraffin-embedded human brain tissue using PACO44647 at dilution of 1:100.



Immunohistochemistry of paraffin-embedded human testis tissue using PACO44647 at dilution of 1:100.