

PACO44645

Product Information

Size:

50ul

Reactivity:

Human

Source:

Rabbit

Isotype:

IgG

Applications:

ELISA, WB, IHC

Recommended dilutions:

ELISA:1:2000-1:10000, WB:1:1000-1:5000,
IHC:1:20-1:200

Protein Background:

Transcription factor which plays a key role in defining the composition of the RNA polymerase II (RNAPII) elongation complex and in modulating the production of mature mRNA transcripts. Acts as an assembly factor to recruit various factors to the RNAPII elongation complex and is recruited to the complex via binding to the transcription elongation factor SUPT6H bound to the C-terminal domain (CTD) of the RNAPII subunit RPB1 (POLR2A). The SUPT6H: IWS1: CTD complex recruits mRNA export factors (ALYREF/THOC4, EXOSC10) as well as histone modifying enzymes (such as SETD2) to ensure proper mRNA splicing, efficient mRNA export and elongation-coupled H3K36 methylation, a signature chromatin mark of active transcription.

Gene ID:

IWS1

Uniprot

Q96ST2

Synonyms:

Protein IWS1 homolog (IWS1-like protein), IWS1, IWS1L

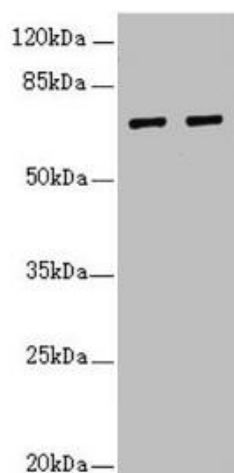
Immunogen:

Recombinant Human Protein IWS1 homolog protein (570-819AA).

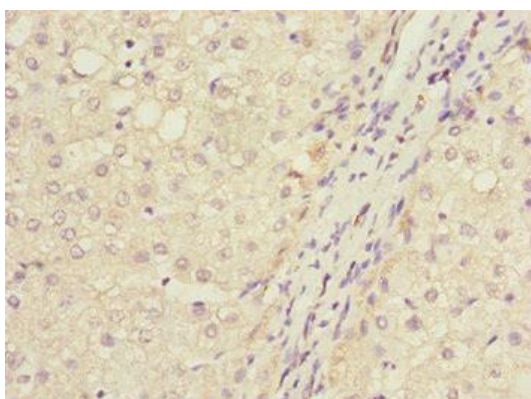
Storage:

PBS with 0.02% sodium azide, 50% glycerol, pH7.3.

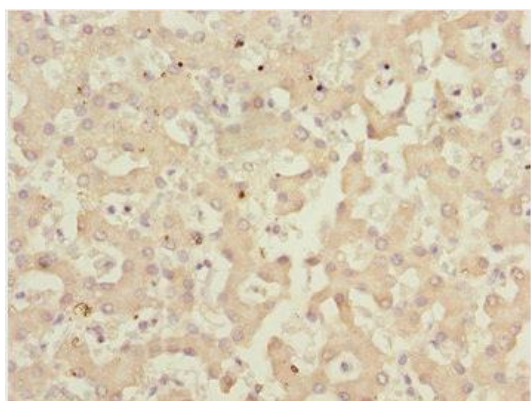
Product Images



Western blot. All lanes: IWS1 antibody at 3.84 μ g/ml. Lane 1: 293T whole cell lysate. Lane 2: Jurkat whole cell lysate. Secondary: Goat polyclonal to rabbit IgG at 1/10000 dilution. Predicted band size: 92, 57, 70 kDa. Observed band size: 70 kDa.



Immunohistochemistry of paraffin-embedded human liver cancer using PACO44645 at dilution of 1:100.



Immunohistochemistry of paraffin-embedded human liver tissue using PACO44645 at dilution of 1:100.