

# EEF1A2 Antibody



PACO44626

---

## Product Information

**Size:**

50ul

**Reactivity:**

Human

**Source:**

Rabbit

**Isotype:**

IgG

**Applications:**

ELISA, WB, IHC

**Recommended dilutions:**

ELISA:1:2000-1:10000, WB:1:1000-1:5000,  
IHC:1:20-1:200

**Protein Background:**

This protein promotes the GTP-dependent binding of aminoacyl-tRNA to the A-site of ribosomes during protein biosynthesis.

**Gene ID:**

EEF1A2

**Uniprot**

Q05639

**Synonyms:**

Elongation factor 1-alpha 2 (EF-1-alpha-2) (Eukaryotic elongation factor 1 A-2) (eEF1A-2) (Statin-S1), EEF1A2, EEF1AL STN

**Immunogen:**

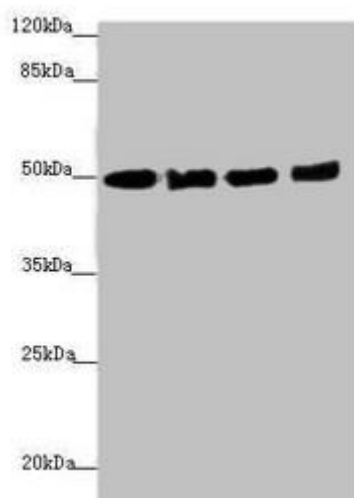
Recombinant Human Elongation factor 1-&alpha; 2 protein (184-463AA).

**Storage:**

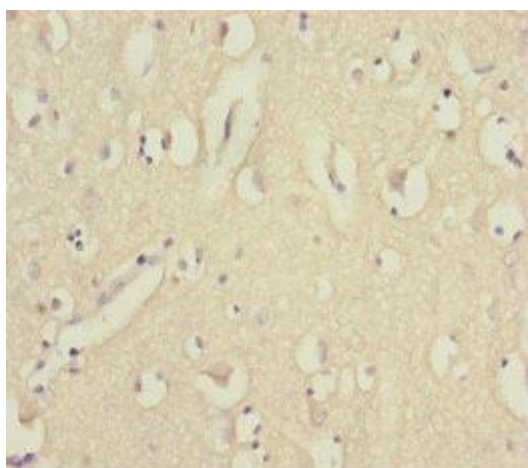
PBS with 0.02% sodium azide, 50% glycerol, pH7.3.

## Product Images

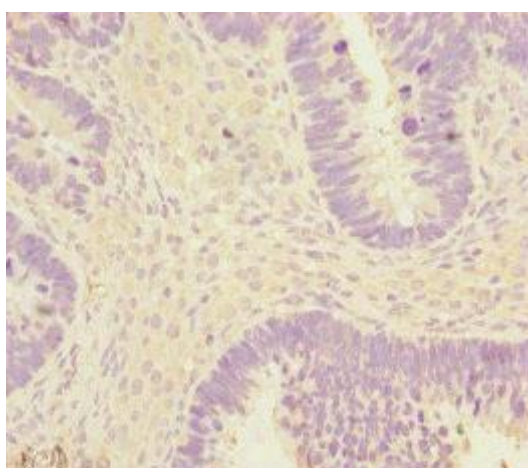
---



Western blot. All lanes: EEF1A2 antibody at 1.46 $\mu$ g/ml. Lane 1: MCF-7 whole cell lysate. Lane 2: Hela whole cell lysate. Lane 3: Raji whole cell lysate. Lane 4: A431 whole cell lysate. Secondary. Goat polyclonal to rabbit IgG at 1/10000 dilution. Predicted band size: 50 kDa. Observed band size: 50 kDa.



Immunohistochemistry of paraffin-embedded human brain tissue using PACO44626 at dilution of 1:100.



Immunohistochemistry of paraffin-embedded human ovarian cancer using PACO44626 at dilution of 1:100.