

Product Information

Size:

50ul

Reactivity:

Human

Source:

Rabbit

Isotype:

IgG

Applications:

ELISA, WB, IHC

Recommended dilutions:

ELISA:1:2000-1:10000, WB:1:1000-1:5000,
IHC:1:20-1:200

Protein Background:

Regulator of Notch signaling, a signaling pathway involved in cell-cell communications that regulates a broad spectrum of cell-fate determinations. Probably acts both as a positive and negative regulator of Notch, depending on the developmental and cell context. Mediates the antineural activity of Notch, possibly by inhibiting the transcriptional activation mediated by MATCH1. Functions as a ubiquitin ligase protein in vitro, suggesting that it may regulate the Notch pathway via some ubiquitin ligase activity.

Gene ID:

DTX2

Uniprot

Q86UW9

Synonyms:

Probable E3 ubiquitin-protein ligase DTX2 (EC 2.3.2.27) (Protein deltex-2) (Deltex2) (hDTX2) (RING finger protein 58) (RING-type E3 ubiquitin transferase DTX2), DTX2, KIAA1528 RNF58

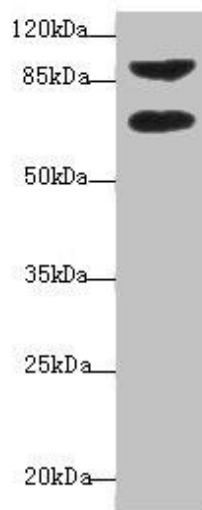
Immunogen:

Recombinant Human Probable E3 ubiquitin-protein ligase DTX2 protein (1-280AA).

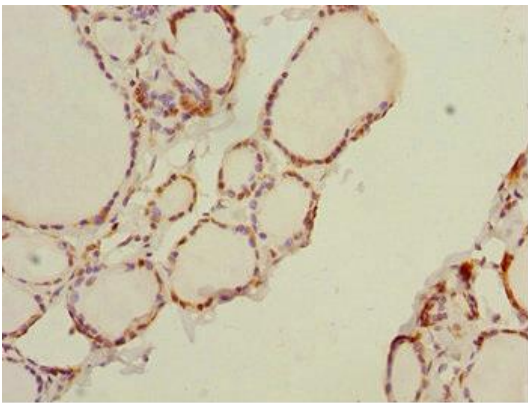
Storage:

PBS with 0.02% sodium azide, 50% glycerol, pH7.3.

Product Images



Western blot. All lanes: DTX2 antibody at 1 μ g/ml + HepG2 whole cell lysate. Secondary. Goat polyclonal to rabbit IgG at 1/10000 dilution. Predicted band size: 68, 63 kDa. Observed band size: 68, 92 kDa.



Immunohistochemistry of paraffin-embedded human thyroid tissue using PACO44624 at dilution of 1:100.