

Product Information

Size:

50ul

Reactivity:

Human

Source:

Rabbit

Isotype:

IgG

Applications:

ELISA, WB, IHC

Recommended dilutions:

ELISA:1:2000-1:10000, WB:1:1000-1:5000,
IHC:1:20-1:200

Protein Background:

Necessary for the degradation of mRNAs, both in normal mRNA turnover and in nonsense-mediated mRNA decay. Removes the 7-methyl guanine cap structure from mRNA molecules, yielding a 5'-phosphorylated mRNA fragment and 7m-GDP. Contributes to the transactivation of target genes after stimulation by TGFB1.

Gene ID:

DCP1A

Uniprot

Q9NPI6

Synonyms:

mRNA-decapping enzyme 1A (EC 3) (Smad4-interacting transcriptional co-activator) (Transcription factor SMIF), DCP1A, SMIF

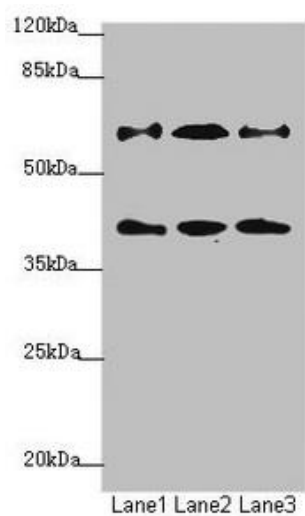
Immunogen:

Recombinant Human mRNA-decapping enzyme 1A protein (303-582AA).

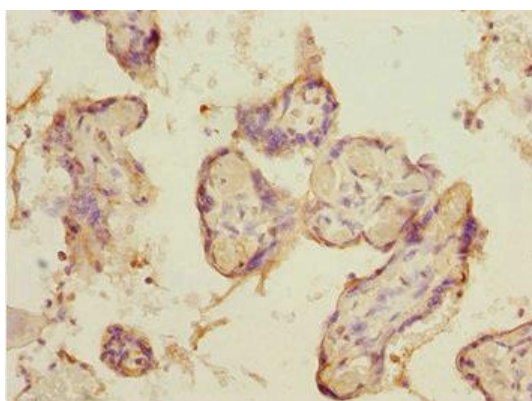
Storage:

PBS with 0.02% sodium azide, 50% glycerol, pH7.3.

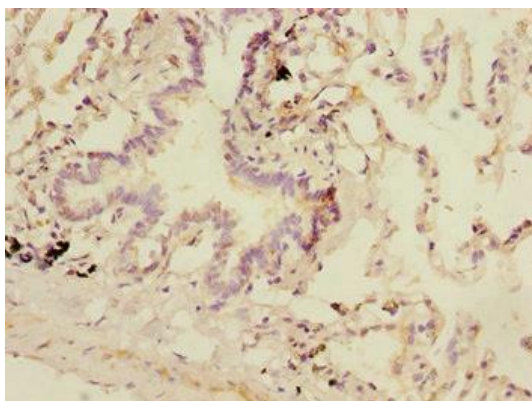
Product Images



Western blot. All lanes: DCP1A antibody at 1.23 μ g/ml. Lane 1: Jurkat whole cell lysate. Lane 2: 293T whole cell lysate. Lane 3: HepG2 whole cell lysate. Secondary. Goat polyclonal to rabbit IgG at 1/10000 dilution. Predicted band size: 64, 60 kDa. Observed band size: 64, 40 kDa.



Immunohistochemistry of paraffin-embedded human placenta tissue using PACO44621 at dilution of 1:100.



Immunohistochemistry of paraffin-embedded human lung tissue using PACO44621 at dilution of 1:100.