

ZDHHC16 Antibody



PACO44600

Product Information

Size:

50ul

Reactivity:

Human

Source:

Rabbit

Isotype:

IgG

Applications:

ELISA, WB

Recommended dilutions:

ELISA:1:2000-1:10000, WB:1:1000-1:5000

Protein Background:

May be involved in apoptosis regulation.

Gene ID:

ZDHHC16

Uniprot

Q969W1

Synonyms:

Palmitoyltransferase ZDHHC16 (EC 2.3.1.225) (Abl-philin 2) (Zinc finger DHHC domain-containing protein 16) (DHHC-16), ZDHHC16, APH2

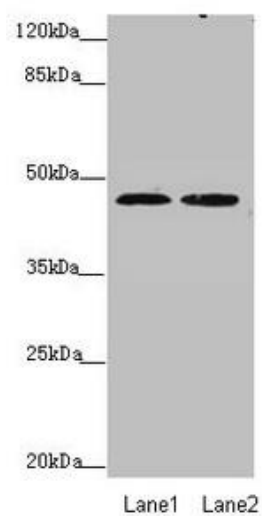
Immunogen:

Recombinant Human Palmitoyltransferase ZDHHC16 protein (288-377AA).

Storage:

PBS with 0.02% sodium azide, 50% glycerol, pH7.3.

Product Images



Western blot. All lanes: ZDHHC16 antibody at 0.89 $\mu\text{g}/\text{ml}$. Lane 1: MCF-7 whole cell lysate. Lane 2: HepG2 whole cell lysate. Secondary: Goat polyclonal to rabbit IgG at 1/10000 dilution. Predicted band size: 44, 42, 39, 35 kDa. Observed band size: 44 kDa.