

# SHOX2 Antibody



PACO44595

---

## Product Information

**Size:**

50ul

**Reactivity:**

Human

**Source:**

Rabbit

**Isotype:**

IgG

**Applications:**

ELISA, IHC

**Recommended dilutions:**

ELISA:1:2000-1:10000, IHC:1:20-1:200

**Protein Background:**

May be a growth regulator and have a role in specifying neural systems involved in processing somatosensory information, as well as in face and body structure formation.

**Gene ID:**

SHOX2

**Uniprot**

O60902

**Synonyms:**

Short stature homeobox protein 2 (Homeobox protein Og12X) (Paired-related homeobox protein SHOT), SHOX2, OG12X SHOT

**Immunogen:**

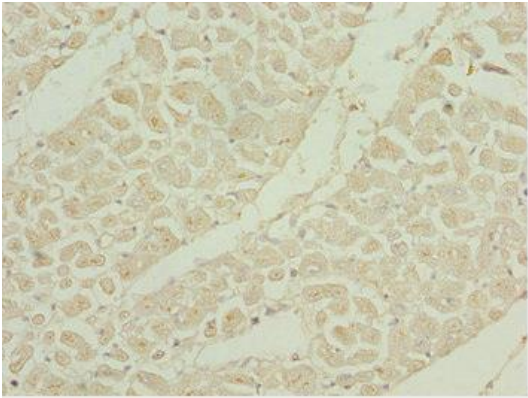
Recombinant Human Short stature homeobox protein 2 protein (72-331AA).

**Storage:**

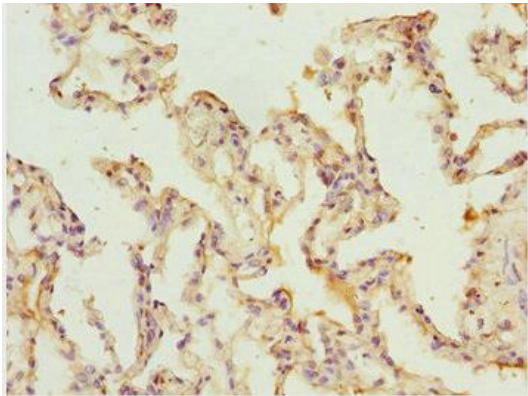
PBS with 0.02% sodium azide, 50% glycerol, pH7.3.

## Product Images

---



Immunohistochemistry of paraffin-embedded human heart tissue using PACO44595 at dilution of 1:100.



Immunohistochemistry of paraffin-embedded human lung tissue using PACO44595 at dilution of 1:100.