

# GCM1 Antibody



PACO44578

---

## Product Information

**Size:**

50ul

**Reactivity:**

Human

**Source:**

Rabbit

**Isotype:**

IgG

**Applications:**

ELISA, WB, IHC

**Recommended dilutions:**

ELISA:1:2000-1:10000, WB:1:1000-1:5000,  
IHC:1:20-1:200

**Protein Background:**

Transcription factor that is necessary for placental development. Binds to the trophoblast-specific element 2 (TSE2) of the aromatase gene enhancer.

**Gene ID:**

GCM1

**Uniprot**

Q9NP62

**Synonyms:**

Chorion-specific transcription factor GCMa (hGCMa) (GCM motif protein 1) (Glial cells missing homolog 1), GCM1, GCMA

**Immunogen:**

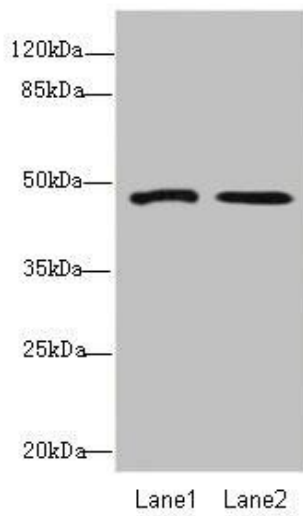
Recombinant Human Chorion-specific transcription factor GCMa protein (207-436AA).

**Storage:**

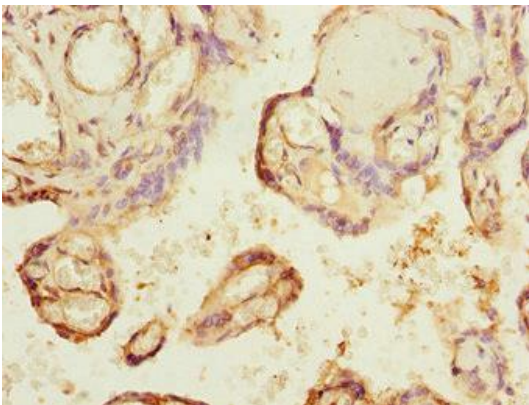
PBS with 0.02% sodium azide, 50% glycerol, pH7.3.

## Product Images

---



Western blot. All lanes: GCM1 antibody at 1.67  $\mu$ g/ml. Lane 1: HeLa whole cell lysate. Lane 2: HepG2 whole cell lysate. Secondary: Goat polyclonal to rabbit IgG at 1/10000 dilution. Predicted band size: 49 kDa. Observed band size: 49 kDa.



Immunohistochemistry of paraffin-embedded human placenta tissue using PACO44578 at dilution of 1:100.