

UBE2Z Antibody



PACO44567

Product Information

Size:

50ul

Reactivity:

Human, Mouse

Source:

Rabbit

Isotype:

IgG

Applications:

ELISA, WB, IHC

Recommended dilutions:

ELISA:1:2000-1:10000, WB:1:1000-1:5000,
IHC:1:20-1:200

Protein Background:

Catalyzes the covalent attachment of ubiquitin to other proteins. Specific substrate for UBA6, not charged with ubiquitin by UBE1. May be involved in apoptosis regulation.

Gene ID:

UBE2Z

Uniprot

Q9H832

Synonyms:

Ubiquitin-conjugating enzyme E2 Z (EC 2.3.2.23) (E2 ubiquitin-conjugating enzyme Z) (Uba6-specific E2 conjugating enzyme 1) (Use1) (Ubiquitin carrier protein Z) (Ubiquitin-protein ligase Z), UBE2Z

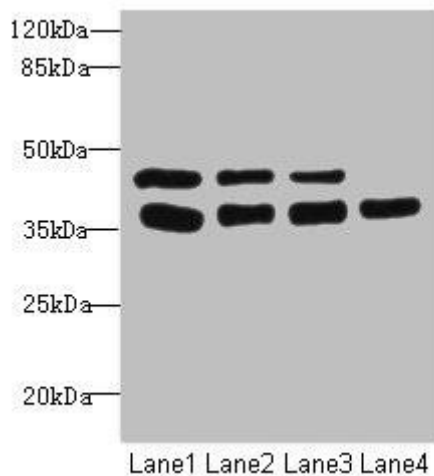
Immunogen:

Recombinant Human Ubiquitin-conjugating enzyme E2 Z protein (115-354AA).

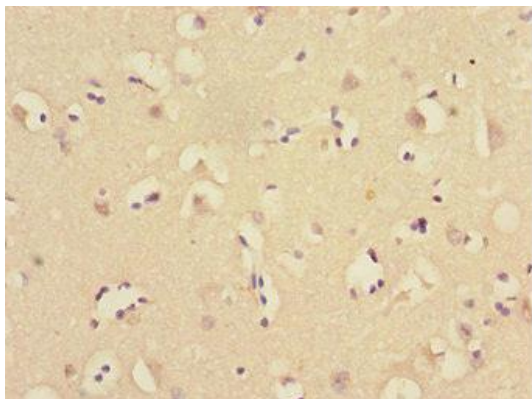
Storage:

PBS with 0.02% sodium azide, 50% glycerol, pH7.3.

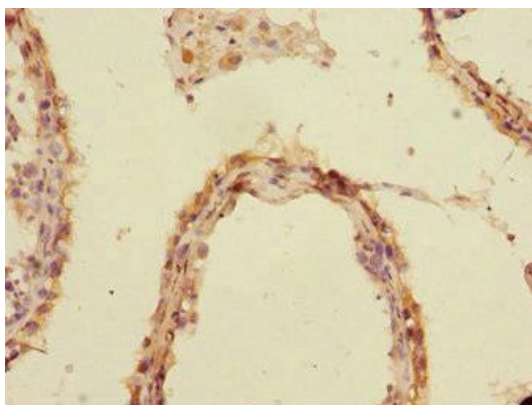
Product Images



Western blot. All lanes: UBE2Z antibody at 3.37 μ g/ml. Lane 1: MCF-7 whole cell lysate. Lane 2: HepG2 whole cell lysate. Lane 3: Hela whole cell lysate. Lane 4: Mouse gonadal tissue. Secondary. Goat polyclonal to rabbit IgG at 1/10000 dilution. Predicted band size: 39, 29 kDa. Observed band size: 39 kDa.



Immunohistochemistry of paraffin-embedded human brain tissue using PACO44567 at dilution of 1:100.



Immunohistochemistry of paraffin-embedded human testis tissue using PACO44567 at dilution of 1:100.