

# UBE2Z Antibody



PACO44566

---

## Product Information

**Size:**

50ul

**Reactivity:**

Human

**Source:**

Rabbit

**Isotype:**

IgG

**Applications:**

ELISA, WB, IHC

**Recommended dilutions:**

ELISA:1:2000-1:10000, WB:1:1000-1:5000,  
IHC:1:20-1:200

**Protein Background:**

Catalyzes the covalent attachment of ubiquitin to other proteins. Specific substrate for UBA6, not charged with ubiquitin by UBE1. May be involved in apoptosis regulation.

**Gene ID:**

UBE2Z

**Uniprot**

Q9H832

**Synonyms:**

Ubiquitin-conjugating enzyme E2 Z (EC 2.3.2.23) (E2 ubiquitin-conjugating enzyme Z) (Uba6-specific E2 conjugating enzyme 1) (Use1) (Ubiquitin carrier protein Z) (Ubiquitin-protein ligase Z), UBE2Z

**Immunogen:**

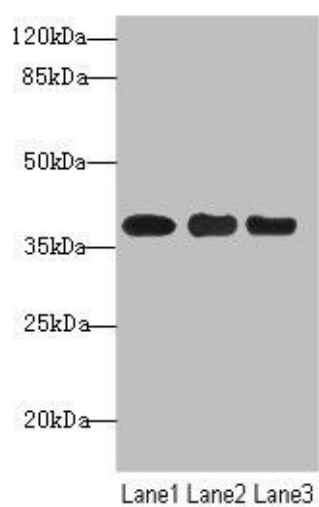
Recombinant Human Ubiquitin-conjugating enzyme E2 Z protein (115-354AA).

**Storage:**

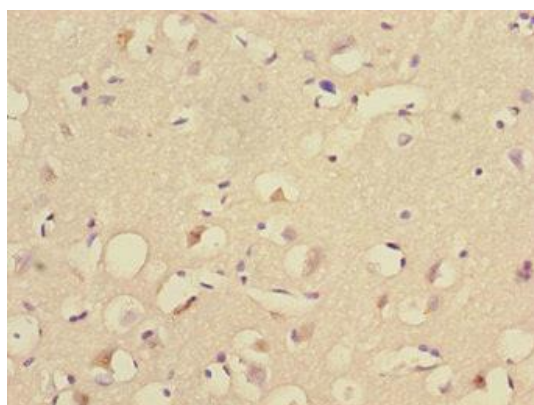
PBS with 0.02% sodium azide, 50% glycerol, pH7.3.

## Product Images

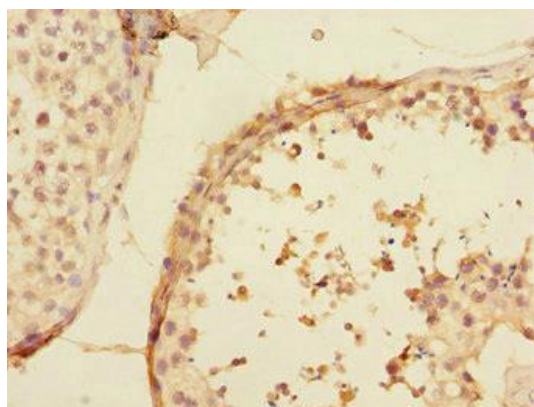
---



Western blot. All lanes: UBE2Z antibody at 1.68 $\mu$ g/ml. Lane 1: MCF-7 whole cell lysate. Lane 2: HepG2 whole cell lysate. Lane 3: Hela whole cell lysate. Secondary. Goat polyclonal to rabbit IgG at 1/10000 dilution. Predicted band size: 39, 29 kDa. Observed band size: 39 kDa.



Immunohistochemistry of paraffin-embedded human brain tissue using PACO44566 at dilution of 1:100.



Immunohistochemistry of paraffin-embedded human testis tissue using PACO44566 at dilution of 1:100.