

PACO44561

Product Information

Size:

50ul

Reactivity:

Human, Mouse

Source:

Rabbit

Isotype:

IgG

Applications:

ELISA, WB, IHC

Recommended dilutions:

ELISA:1:2000-1:10000, WB:1:1000-1:5000,
IHC:1:20-1:200

Protein Background:

Possesses thioredoxin activity. Has been shown to reduce insulin disulfide bonds. Also complements protein disulfide-isomerase deficiency in yeast.

Gene ID:

TXNDC5

Uniprot

Q8NBS9

Synonyms:

Thioredoxin domain-containing protein 5 (Endoplasmic reticulum resident protein 46) (ER protein 46) (ERp46) (Thioredoxin-like protein p46), TXNDC5, TLP46

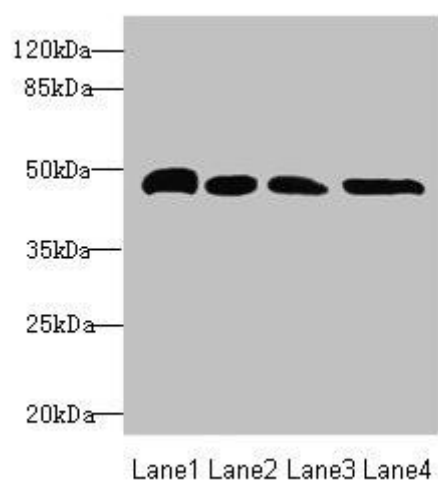
Immunogen:

Recombinant Human Thioredoxin domain-containing protein 5 protein (1-324AA).

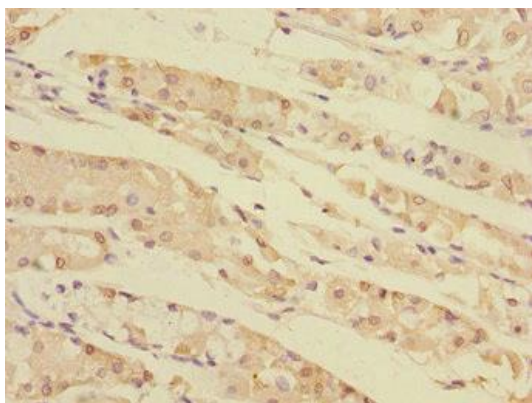
Storage:

PBS with 0.02% sodium azide, 50% glycerol, pH7.3.

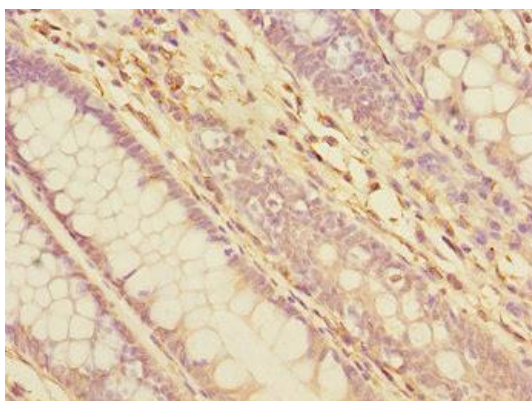
Product Images



Western blot. All lanes: TXNDC5 antibody at 5.75 μ g/ml. Lane 1: HepG2 whole cell lysate. Lane 2: Colo320 whole cell lysate. Lane 3: Mouse brain tissue. Lane 4: Mouse stomach tissue. Secondary. Goat polyclonal to rabbit IgG at 1/10000 dilution. Predicted band size: 48, 37 kDa. Observed band size: 48 kDa.



Immunohistochemistry of paraffin-embedded human gastric cancer using PACO44561 at dilution of 1:100.



Immunohistochemistry of paraffin-embedded human colon cancer using PACO44561 at dilution of 1:100.