

TOB2 Antibody



PACO44555

Product Information

Size:

50ul

Reactivity:

Human, Mouse

Source:

Rabbit

Isotype:

IgG

Applications:

ELISA, WB, IHC

Recommended dilutions:

ELISA:1:2000-1:10000, WB:1:1000-1:5000,
IHC:1:20-1:200

Protein Background:

Anti-proliferative protein inhibits cell cycle progression from the G0/G1 to S phases.

Gene ID:

TOB2

Uniprot

Q14106

Synonyms:

Protein Tob2 (Protein Tob4) (Transducer of erbB-2 2), TOB2, KIAA1663 TOB4 TROB2

Immunogen:

Recombinant Human Protein Tob2 protein (1-70AA).

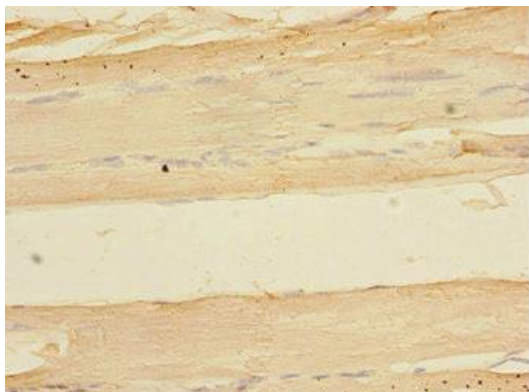
Storage:

PBS with 0.02% sodium azide, 50% glycerol, pH7.3.

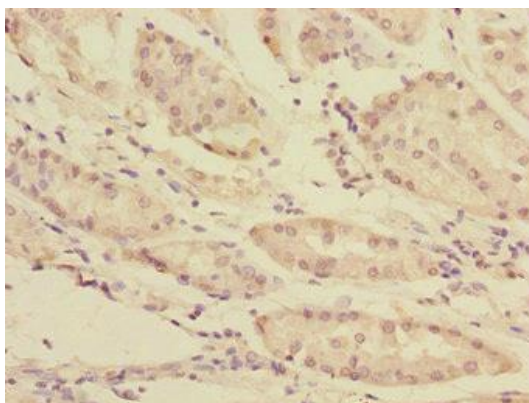
Product Images



Western blot. All lanes: TOB2 antibody at 1.89 μ g/ml. Lane 1: Mouse skeletal muscle tissue. Lane 2: Mouse heart tissue. Secondary. Goat polyclonal to rabbit IgG at 1/10000 dilution. Predicted band size: 37, 28 kDa. Observed band size: 37 kDa.



Immunohistochemistry of paraffin-embedded human skeletal muscle tissue using PACO44555 at dilution of 1:100.



Immunohistochemistry of paraffin-embedded human gastric cancer tissue using PACO44555 at dilution of 1:100.