

PACO44549

Product Information

Size:

50ul

Reactivity:

Human

Source:

Rabbit

Isotype:

IgG

Applications:

ELISA, WB, IHC

Recommended dilutions:

ELISA:1:2000-1:10000, WB:1:1000-1:5000,
IHC:1:20-1:200

Protein Background:

Guanine nucleotide-binding protein forming heterodimeric Rag complexes required for the amino acid, induced relocalization of mTORC1 to the lysosomes and its subsequent activation by the GTPase RHEB. This is a crucial step in the activation of the TOR signaling cascade by amino acid, .

Gene ID:

RRAGC

Uniprot

Q9HB90

Synonyms:

Ras-related GTP-binding protein C (Rag C) (RagC) (GTPase-interacting protein 2) (TIB929), RRAGC

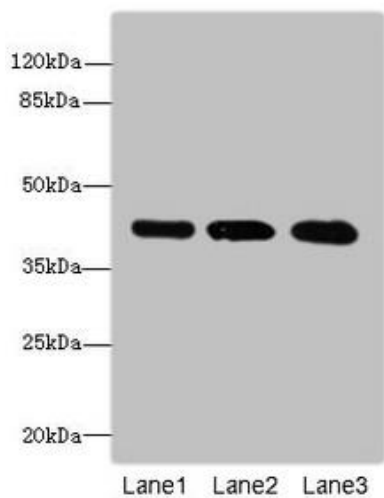
Immunogen:

Recombinant Human Ras-related GTP-binding protein C protein (1-250AA).

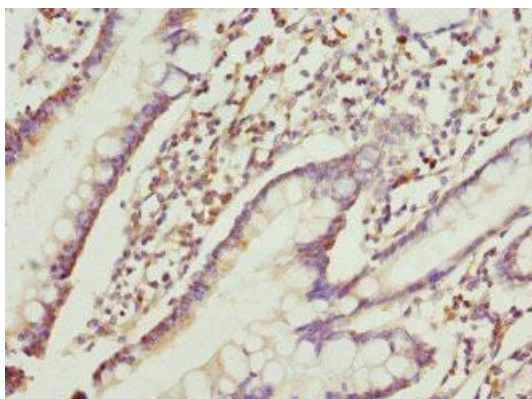
Storage:

PBS with 0.02% sodium azide, 50% glycerol, pH7.3.

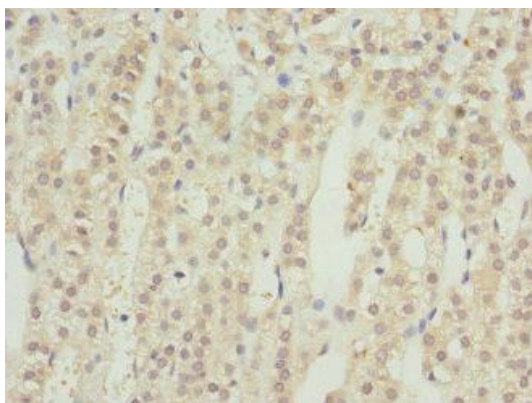
Product Images



Western blot. All lanes: RRAGC antibody at 1.14 μ g/ml. Lane 1: HeLa whole cell lysate. Lane 2: MCF-7 whole cell lysate. Lane 3: A549 whole cell lysate. Secondary. Goat polyclonal to rabbit IgG at 1/10000 dilution. Predicted band size: 44 kDa. Observed band size: 44 kDa.



Immunohistochemistry of paraffin-embedded human small intestine tissue using PACO44549 at dilution of 1:100.



Immunohistochemistry of paraffin-embedded human adrenal gland tissue using PACO44549 at dilution of 1:100.