

PACO44536

---

## Product Information

**Size:**

50ul

**Reactivity:**

Human

**Source:**

Rabbit

**Isotype:**

IgG

**Applications:**

ELISA, IHC

**Recommended dilutions:**

ELISA:1:2000-1:10000, IHC:1:20-1:200

**Protein Background:**

Activates the Jnk signaling pathway. Dephosphorylates and deactivates p38 and stress-activated protein kinase/c-Jun N-terminal kinase (SAPK/JNK).

**Gene ID:**

DUSP22

**Uniprot**

Q9NRW4

**Synonyms:**

Dual specificity protein phosphatase 22 (EC 3.1.3.16) (EC 3.1.3.48) (JNK-stimulatory phosphatase-1) (JSP-1) (Low molecular weight dual specificity phosphatase 2) (LMW-DSP2) (Mitogen-activated protein kinase phosphatase x) (MAP kinase phosphatase x) (MKP-x), DUSP22, JSP1 LMWDSP2 MKPX

**Immunogen:**

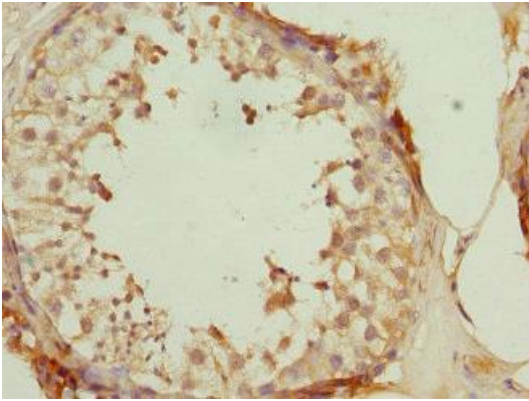
Recombinant Human Dual specificity protein phosphatase 22 protein (1-184AA).

**Storage:**

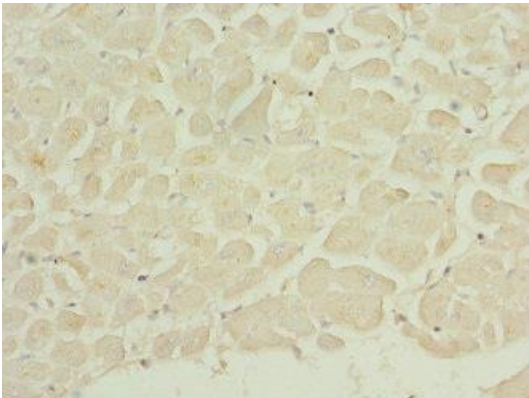
PBS with 0.02% sodium azide, 50% glycerol, pH7.3.

## Product Images

---



Immunohistochemistry of paraffin-embedded human testis tissue using PACO44536 at dilution of 1:100.



Immunohistochemistry of paraffin-embedded human heart tissue using PACO44536 at dilution of 1:100.