

# SLC46A1 Antibody



PACO44528

---

## Product Information

**Size:**

50ul

**Reactivity:**

Human

**Source:**

Rabbit

**Isotype:**

IgG

**Applications:**

ELISA, IHC

**Recommended dilutions:**

ELISA:1:2000-1:10000, IHC:1:20-1:200

**Protein Background:**

Has been shown to act both as an intestinal proton-coupled high-affinity folate transporter and as an intestinal heme transporter which mediates heme uptake from the gut lumen into duodenal epithelial cells. The iron is then released from heme and may be transported into the bloodstream. Dietary heme iron is an important nutritional source of iron. Shows a higher affinity for folate than heme.

**Gene ID:**

SLC46A1

**Uniprot**

Q96NT5

**Synonyms:**

Proton-coupled folate transporter (G21) (Heme carrier protein 1) (PCFT/HCP1) (Solute carrier family 46 member 1), SLC46A1, HCP1 PCFT

**Immunogen:**

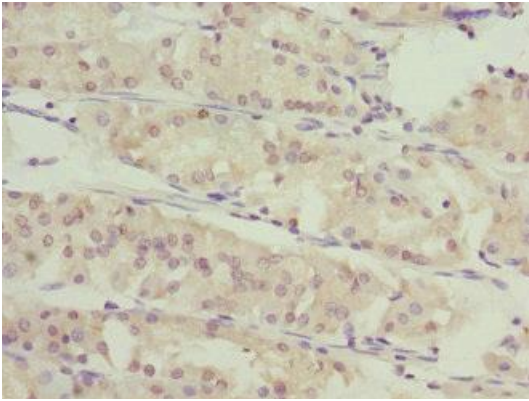
Recombinant Human Proton-coupled folate transporter protein (1-130AA).

**Storage:**

PBS with 0.02% sodium azide, 50% glycerol, pH7.3.

## Product Images

---



Immunohistochemistry of paraffin-embedded human gastric cancer using PACO44528 at dilution of 1:100.