

Product Information

Size:

50ul

Reactivity:

Human

Source:

Rabbit

Isotype:

IgG

Applications:

ELISA, IHC

Recommended dilutions:

ELISA:1:2000-1:10000, IHC:1:20-1:200

Protein Background:

Stereospecific 11-cis retinol dehydrogenase, which catalyzes the final step in the biosynthesis of 11-cis retinaldehyde, the universal chromophore of visual pigments. Also able to oxidize 9-cis-retinol and 13-cis-retinol, but not all-trans-retinol. Active in the presence of NAD as cofactor but not in the presence of NADP.

Gene ID:

RDH5

Uniprot

Q92781

Synonyms:

11-cis retinol dehydrogenase (11-cis RDH) (11-cis RoDH) (EC 1.1.1.315) (9-cis retinol dehydrogenase) (9cRDH) (Retinol dehydrogenase 5) (Short chain dehydrogenase/reductase family 9C member 5), RDH5, HSD17B9 RDH1 SDR9C5

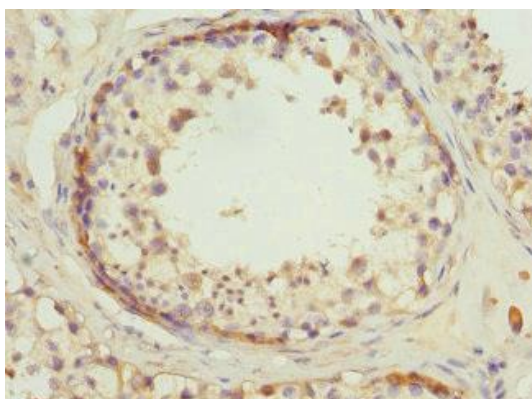
Immunogen:

Recombinant Human 11-cis retinol dehydrogenase protein (24-318AA).

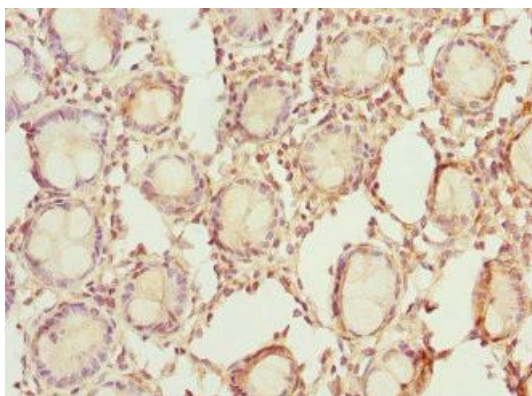
Storage:

PBS with 0.02% sodium azide, 50% glycerol, pH7.3.

Product Images



Immunohistochemistry of paraffin-embedded human testis tissue using PACO44524 at dilution of 1:100.



Immunohistochemistry of paraffin-embedded human colon tissue using PACO44524 at dilution of 1:100.