

MEST Antibody



PACO44508

Product Information

Size:

50ul

Reactivity:

Human

Source:

Rabbit

Isotype:

IgG

Applications:

ELISA, IHC

Recommended dilutions:

ELISA:1:2000-1:10000, IHC:1:20-1:200

Protein Background:

endoplasmic reticulum, extracellular exosome, hydrolase activity, mesoderm development, regulation of lipid storage.

Gene ID:

MEST

Uniprot

Q5EB52

Synonyms:

Mesoderm-specific transcript homolog protein (EC 3) (Paternally-expressed gene 1 protein), MEST, PEG1

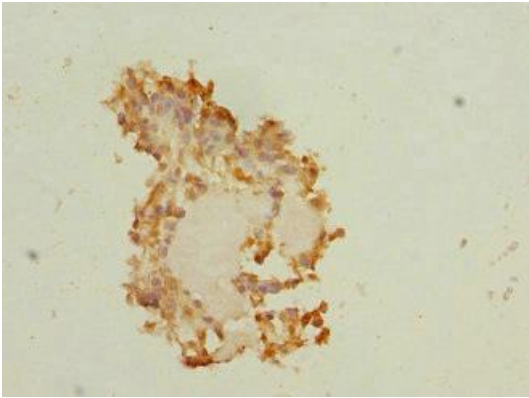
Immunogen:

Recombinant Human Mesoderm-specific transcript homolog protein (146-335AA).

Storage:

PBS with 0.02% sodium azide, 50% glycerol, pH7.3.

Product Images



Immunohistochemistry of paraffin-embedded human breast cancer using PACO44508 at dilution of 1:100.