

STX7 Antibody



PACO44504

Product Information

Size:

50ul

Reactivity:

Human, Mouse

Source:

Rabbit

Isotype:

IgG

Applications:

ELISA, WB, IHC

Recommended dilutions:

ELISA:1:2000-1:10000, WB:1:1000-1:5000,
IHC:1:20-1:200

Protein Background:

May be involved in protein trafficking from the plasma membrane to the early endosome (EE) as well as in homotypic fusion of endocytic organelles. Mediates the endocytic trafficking from early endosomes to late endosomes and lysosomes.

Gene ID:

STX7

Uniprot

O15400

Synonyms:

Syntaxin-7, STX7

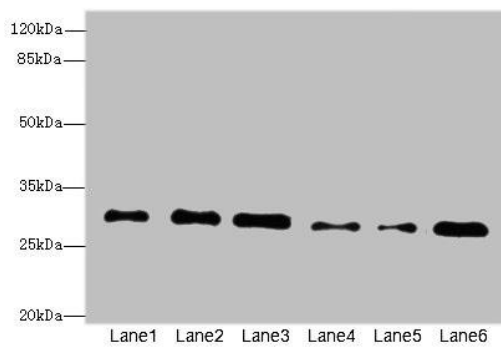
Immunogen:

Recombinant Human Syntaxin-7 protein (1-170AA).

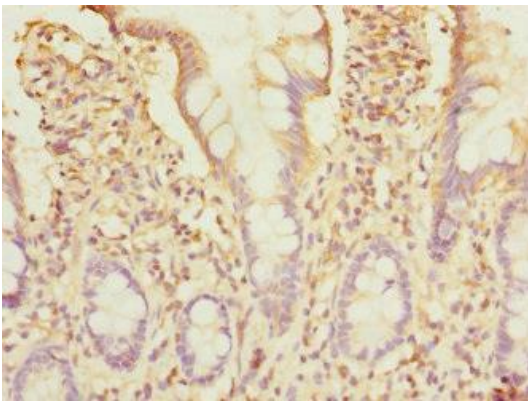
Storage:

PBS with 0.02% sodium azide, 50% glycerol, pH7.3.

Product Images



Western blot. All lanes: STX7 antibody at 2.39 μ g/ml. Lane 1: Mouse brain tissue. Lane 2: Mouse spleen tissue. Lane 3: Hela whole cell lysate. Lane 4: Jurkat whole cell lysate. Lane 5: NIH/3T3 whole cell lysate. Lane 6: HepG2 whole cell lysate. Secondary: Goat polyclonal to rabbit IgG at 1/10000 dilution. Predicted band size: 30, 28 kDa. Observed band size: 30 kDa.



Immunohistochemistry of paraffin-embedded human small intestine tissue using PACO44504 at dilution of 1:100.