

COMMD1 Antibody

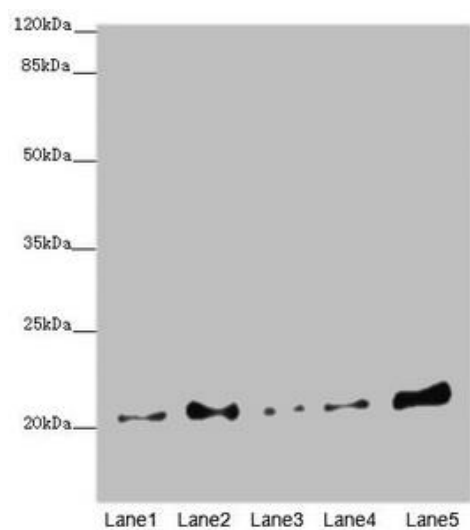


PACO44492

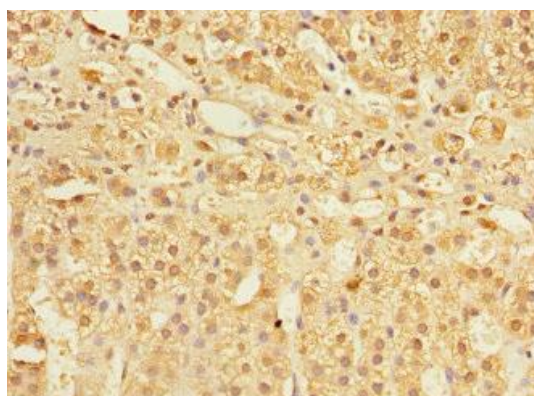
Product Information

Size:	Protein Background:
50ul	
Reactivity:	Gene ID:
Human	COMMD1
Source:	Uniprot
Rabbit	Q8N668
Isotype:	Synonyms:
IgG	COMM domain-containing protein 1 (Protein Murr1), COMMD1, C2orf5 MURR1
Applications:	Immunogen:
ELISA, WB, IHC, IP	Recombinant Human COMM domain-containing protein 1 protein (1-190AA).
Recommended dilutions:	Storage:
ELISA:1:2000-1:10000, WB:1:1000-1:5000, IHC:1:20-1:200, IP:1:200-1:2000	PBS with 0.02% sodium azide, 50% glycerol, pH7.3.

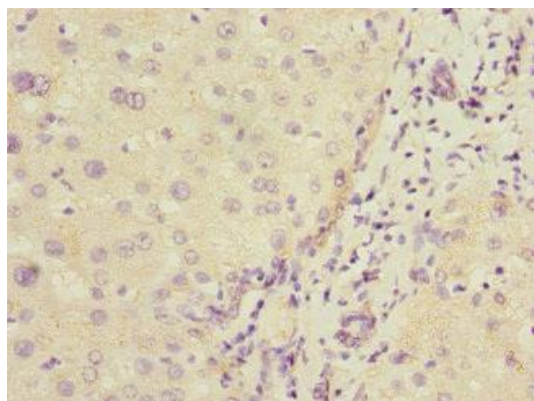
Product Images



Western blot. All lanes: COMMD1 antibody at 5.36 μ g/ml. Lane 1: A549 whole cell lysate. Lane 2: Jurkat whole cell lysate. Lane 3: MCF-7 whole cell lysate. Lane 4: Hela whole cell lysate. Lane 5: HepG2 whole cell lysate. Secondary. Goat polyclonal to rabbit IgG at 1/10000 dilution. Predicted band size: 22, 18 kDa. Observed band size: 22 kDa.



Immunohistochemistry of paraffin-embedded human adrenal gland tissue using PACO44492 at dilution of 1:100.



Immunohistochemistry of paraffin-embedded human liver cancer using PACO44492 at dilution of 1:100.