

PACO44491

Product Information

Size:

50ul

Reactivity:

Human

Source:

Rabbit

Isotype:

IgG

Applications:

ELISA, WB, IHC

Recommended dilutions:

ELISA:1:2000-1:10000, WB:1:1000-1:5000,
IHC:1:20-1:200

Protein Background:

Dual specificity kinase acting on both serine/threonine and tyrosine-containing substrates. Phosphorylates serine- and arginine-rich (SR) proteins of the spliceosomal complex and may be a constituent of a network of regulatory mechanisms that enable SR proteins to control RNA splicing. Phosphorylates: SRSF1, SRSF3 and PTPN1. Regulates the alternative splicing of tissue factor (F3) pre-mRNA in endothelial cells and adenovirus E1A pre-mRNA.

Gene ID:

CLK1

Uniprot

P49759

Synonyms:

Dual specificity protein kinase CLK1 (EC 2.7.12.1) (CDC-like kinase 1), CLK1, CLK

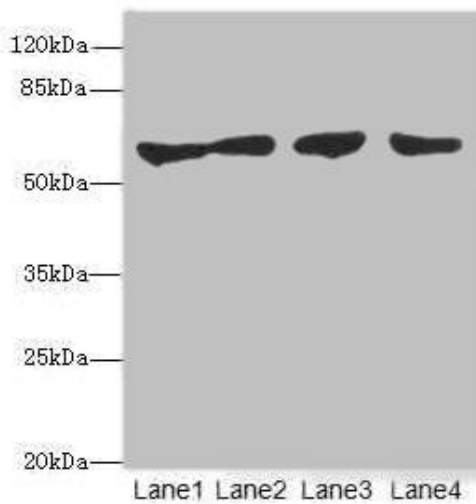
Immunogen:

Recombinant Human Dual specificity protein kinase CLK1 protein (1-130AA).

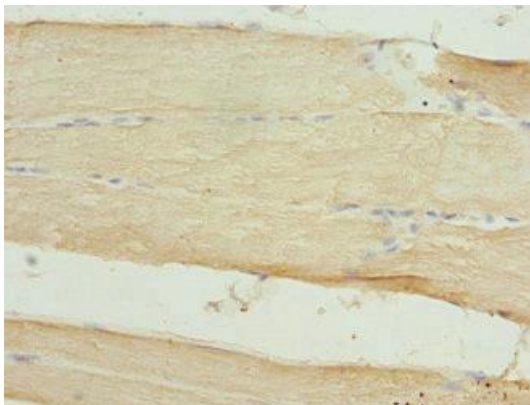
Storage:

PBS with 0.02% sodium azide, 50% glycerol, pH7.3.

Product Images



Western blot. All lanes: CLK1 antibody at 3.07 μ g/ml. Lane 1: HepG2 whole cell lysate. Lane 2: Jurkat whole cell lysate. Lane 3: U251 whole cell lysate. Lane 4: A549 whole cell lysate. Secondary. Goat polyclonal to rabbit IgG at 1/10000 dilution. Predicted band size: 58, 17, 62 kDa. Observed band size: 58 kDa.



Immunohistochemistry of paraffin-embedded human skeletal muscle tissue using PACO44491 at dilution of 1:100.