

MYBPC2 Antibody



PACO44478

Product Information

Size:

50ul

Reactivity:

Human

Source:

Rabbit

Isotype:

IgG

Applications:

ELISA, IHC

Recommended dilutions:

ELISA:1:2000-1:10000, IHC:1:20-1:200

Protein Background:

Thick filament-associated protein located in the crossbridge region of vertebrate striated muscle a bands. In vitro it binds MHC, F-actin and native thin filaments, and modifies the activity of actin-activated myosin ATPase. It may modulate muscle contraction or may play a more structural role.

Gene ID:

MYBPC2

Uniprot

Q14324

Synonyms:

Myosin-binding protein C, fast-type (Fast MyBP-C) (C-protein, skeletal muscle fast isoform), MYBPC2, MYBPCF

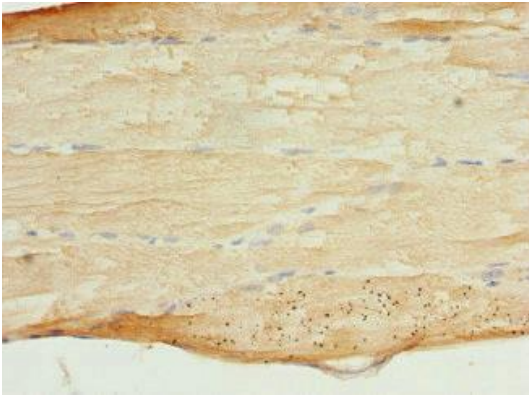
Immunogen:

Recombinant Human Myosin-binding protein C, fast-type protein (912-1141AA).

Storage:

PBS with 0.02% sodium azide, 50% glycerol, pH7.3.

Product Images



Immunohistochemistry of paraffin-embedded human skeletal muscle tissue using PACO44478 at dilution of 1:100.