

PACO44468

Product Information

Size:

50ul

Reactivity:

Human

Source:

Rabbit

Isotype:

IgG

Applications:

ELISA, IHC

Recommended dilutions:

ELISA:1:2000-1:10000, IHC:1:20-1:200

Protein Background:

Possesses tyrosine phosphatase activity. Plays a role in regulating the glomerular pressure/filtration rate relationship through an effect on podocyte structure and function.

Gene ID:

PTPRO

Uniprot

Q16827

Synonyms:

Receptor-type tyrosine-protein phosphatase O (R-PTP-O) (EC 3.1.3.48) (Glomerular epithelial protein 1) (Protein tyrosine phosphatase U2) (PTP-U2) (PTPase U2), PTPRO, GLEPP1 PTPU2

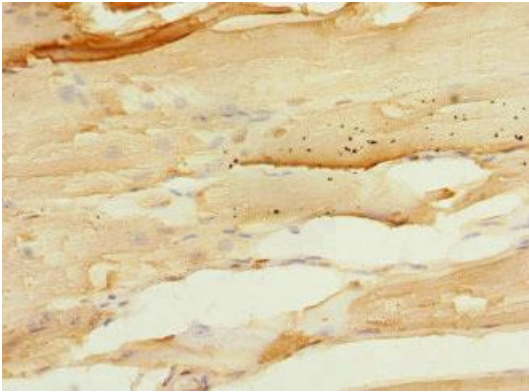
Immunogen:

Recombinant Human Receptor-type tyrosine-protein phosphatase O protein (30-300AA).

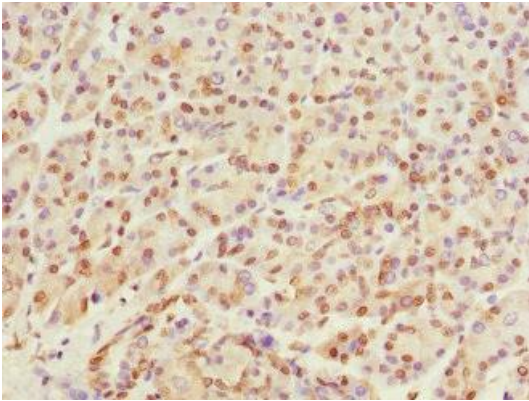
Storage:

PBS with 0.02% sodium azide, 50% glycerol, pH7.3.

Product Images



Immunohistochemistry of paraffin-embedded human skeletal muscle tissue using PACO44468 at dilution of 1:100.



Immunohistochemistry of paraffin-embedded human pancreatic tissue using PACO44468 at dilution of 1:100.