

# PSMD12 Antibody



PACO44467

---

## Product Information

**Size:**

50ul

**Reactivity:**

Human

**Source:**

Rabbit

**Isotype:**

IgG

**Applications:**

ELISA, WB, IHC

**Recommended dilutions:**

ELISA:1:2000-1:10000, WB:1:1000-1:5000,  
IHC:1:20-1:200

**Protein Background:**

Acts as a regulatory subunit of the 26S proteasome which is involved in the ATP-dependent degradation of ubiquitinated proteins.

**Gene ID:**

PSMD12

**Uniprot**

O00232

**Synonyms:**

26S proteasome non-ATPase regulatory subunit 12 (26S proteasome regulatory subunit RPN5) (26S proteasome regulatory subunit p55), PSMD12

**Immunogen:**

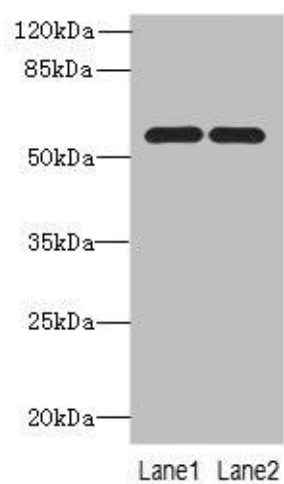
Recombinant Human 26S proteasome non-ATPase regulatory subunit 12 protein (197-456AA).

**Storage:**

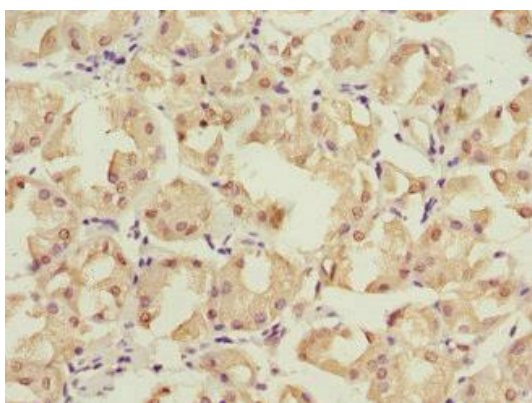
PBS with 0.02% sodium azide, 50% glycerol, pH7.3.

## Product Images

---



Western blot. All lanes: PSMD12 antibody at 0.93 $\mu$ g/ml. Lane 1: U87 whole cell lysate. Lane 2: Hela whole cell lysate. Secondary: Goat polyclonal to rabbit IgG at 1/10000 dilution. Predicted band size: 53, 51 kDa. Observed band size: 53 kDa.



Immunohistochemistry of paraffin-embedded human gastric cancer using PACO44467 at dilution of 1:100.