

PACO44465

Product Information

Size:

50ul

Reactivity:

Human

Source:

Rabbit

Isotype:

IgG

Applications:

ELISA, IHC

Recommended dilutions:

ELISA:1:2000-1:10000, IHC:1:20-1:200

Protein Background:

Cytochromes P450 are a group of heme-thiolate monooxygenases. In liver microsomes, this enzyme is involved in an NADPH-dependent electron transport pathway. It oxidizes a variety of structurally unrelated compounds, including steroids, fatty acid, , and xenobiotics.

Gene ID:

CYP4B1

Uniprot

P13584

Synonyms:

Cytochrome P450 4B1 (EC 1.14.14.1) (CYP4B1) (Cytochrome P450-HP), CYP4B1

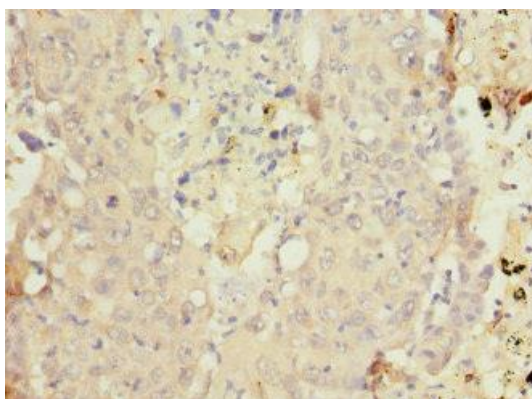
Immunogen:

Recombinant Human Cytochrome P450 4B1 protein (30-250AA).

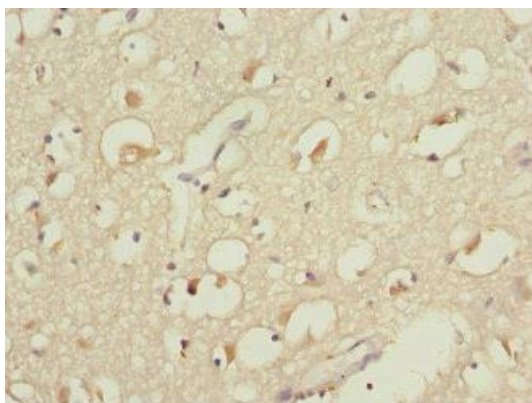
Storage:

PBS with 0.02% sodium azide, 50% glycerol, pH7.3.

Product Images



Immunohistochemistry of paraffin-embedded human lung cancer using PACO44465 at dilution of 1:100.



Immunohistochemistry of paraffin-embedded human brain tissue using PACO44465 at dilution of 1:100.