

PACO44453

Product Information

Size:

50ul

Reactivity:

Human, Mouse

Source:

Rabbit

Isotype:

IgG

Applications:

ELISA, WB, IHC

Recommended dilutions:

ELISA:1:2000-1:10000, WB:1:1000-1:5000,
IHC:1:20-1:200

Protein Background:

cytosol, cytosolic small ribosomal subunit, nucleoplasm, nucleus, ribosome, DNA binding, poly(A) RNA binding, structural constituent of ribosome, zinc ion binding, cell proliferation.

Gene ID:

RPS27

Uniprot

P42677

Synonyms:

40S ribosomal protein S27 (Metallopan-stimulin 1) (MPS-1) (Small ribosomal subunit protein eS27), RPS27, MPS1

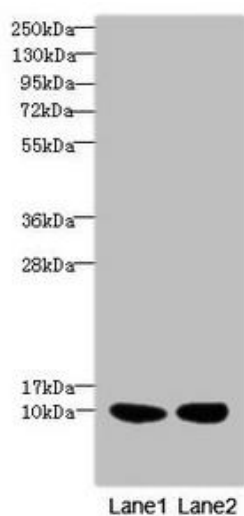
Immunogen:

Recombinant Human 40S ribosomal protein S27 protein (1-84AA).

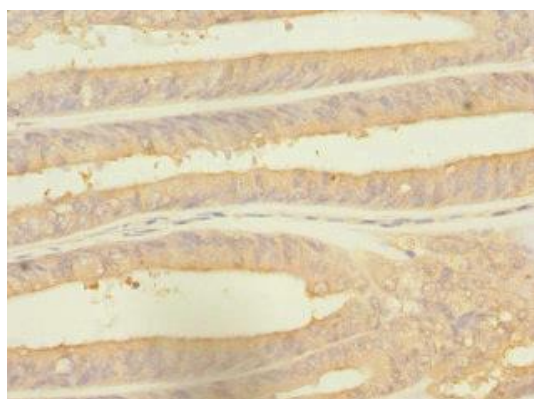
Storage:

PBS with 0.02% sodium azide, 50% glycerol, pH7.3.

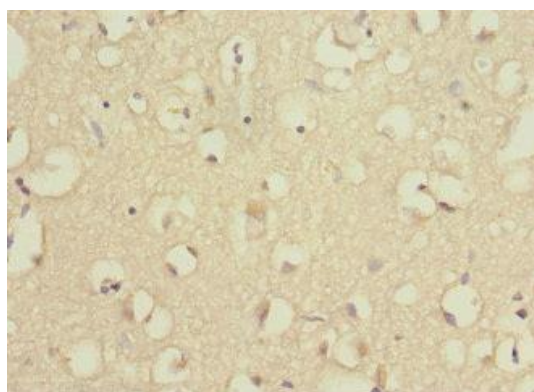
Product Images



Western blot. All lanes: RPS27 antibody at 2.76 μ g/ml. Lane 1: Mouse liver tissue. Lane 2: MCF-7 whole cell lysate. Secondary: Goat polyclonal to rabbit IgG at 1/10000 dilution. Predicted band size: 9 kDa. Observed band size: 9 kDa.



Immunohistochemistry of paraffin-embedded human endometrial cancer using PACO44453 at dilution of 1:100.



Immunohistochemistry of paraffin-embedded human brain tissue using PACO44453 at dilution of 1:100.