

GLP2R Antibody



PACO44438

Product Information

Size:

50ul

Reactivity:

Human

Source:

Rabbit

Isotype:

IgG

Applications:

ELISA, IHC

Recommended dilutions:

ELISA:1:2000-1:10000, IHC:1:20-1:200

Protein Background:

This is a receptor for glucagon-like peptide 2. The activity of this receptor is mediated by G proteins which activate adenylyl cyclase.

Gene ID:

GLP2R

Uniprot

O95838

Synonyms:

Glucagon-like peptide 2 receptor (GLP-2 receptor) (GLP-2-R) (GLP-2R), GLP2R

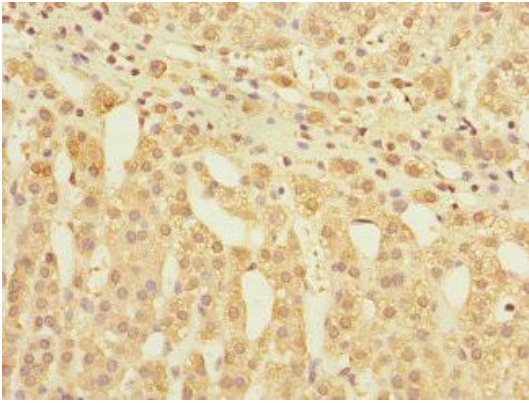
Immunogen:

Recombinant Human Glucagon-like peptide 2 receptor protein (1-180AA).

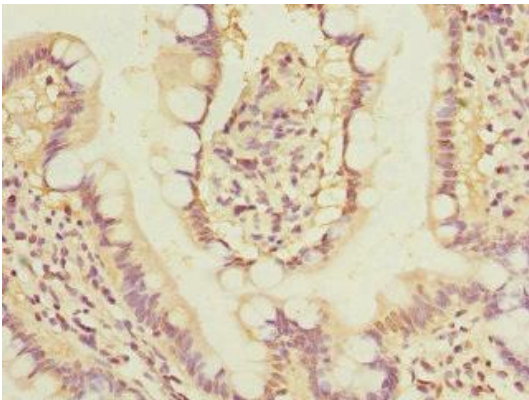
Storage:

PBS with 0.02% sodium azide, 50% glycerol, pH7.3.

Product Images



Immunohistochemistry of paraffin-embedded human adrenal gland tissue using PACO44438 at dilution of 1:100.



Immunohistochemistry of paraffin-embedded human small intestine tissue using PACO44438 at dilution of 1:100.