

# MLLT3 Antibody



PACO44394

---

## Product Information

**Size:**

50ul

**Reactivity:**

Human

**Source:**

Rabbit

**Isotype:**

IgG

**Applications:**

ELISA, IHC

**Recommended dilutions:**

ELISA:1:2000-1:10000, IHC:1:20-1:200

**Protein Background:**

Component of the super elongation complex (SEC), a complex required to increase the catalytic rate of RNA polymerase II transcription by suppressing transient pausing by the polymerase at multiple sites along the DNA.

**Gene ID:**

MLLT3

**Uniprot**

P42568

**Synonyms:**

Protein AF-9 (ALL1-fused gene from chromosome 9 protein) (Myeloid/lymphoid or mixed-lineage leukemia translocated to chromosome 3 protein) (YEATS domain-containing protein 3), MLLT3, AF9 YEATS3

**Immunogen:**

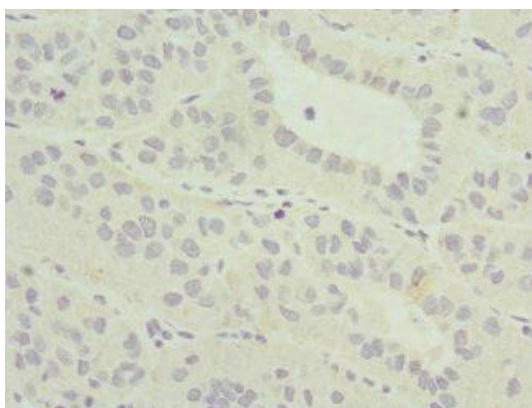
Recombinant Human Protein AF-9 protein (1-150AA).

**Storage:**

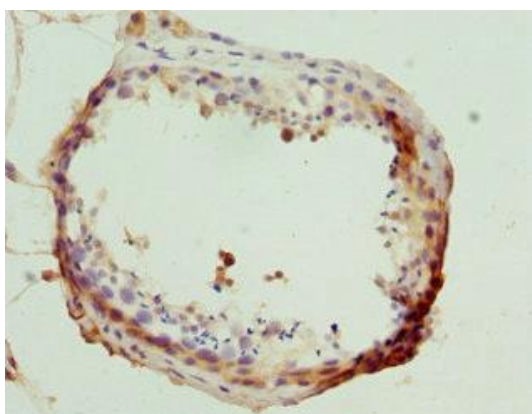
PBS with 0.02% sodium azide, 50% glycerol, pH7.3.

## Product Images

---



Immunohistochemistry of paraffin-embedded human liver cancer using PACO44394 at dilution of 1:100.



Immunohistochemistry of paraffin-embedded human testis tissue using PACO44394 at dilution of 1:100.