

PACO44374

Product Information

Size:

50ul

Reactivity:

Human

Source:

Rabbit

Isotype:

IgG

Applications:

ELISA, WB, IHC

Recommended dilutions:

ELISA:1:2000-1:10000, WB:1:1000-1:5000,
IHC:1:20-1:200

Protein Background:

Cleaves and degrades of the opioid peptide enkephalin. Also cleaves Arg-Arg-beta-naphthylamide.

Gene ID:

DPP3

Uniprot

Q9NY33

Synonyms:

Dipeptidyl peptidase 3 (EC 3.4.14.4) (Dipeptidyl aminopeptidase III) (Dipeptidyl arylamidase III) (Dipeptidyl peptidase III) (DPP III) (Enkephalinase B), DPP3

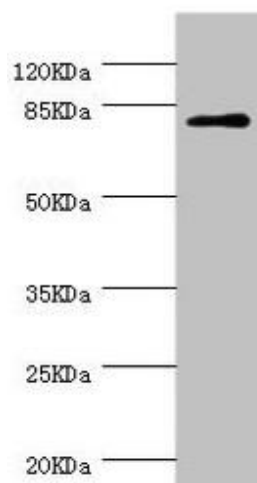
Immunogen:

Recombinant Human Dipeptidyl peptidase 3 protein (1-280AA).

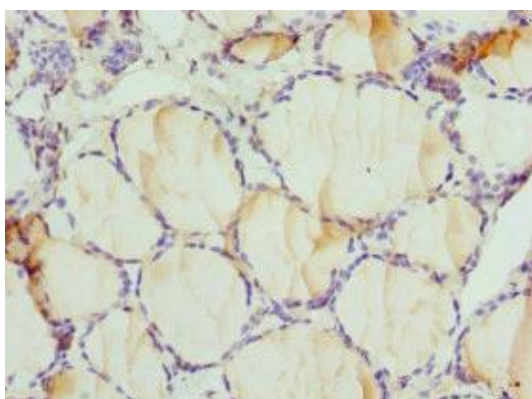
Storage:

PBS with 0.02% sodium azide, 50% glycerol, pH7.3.

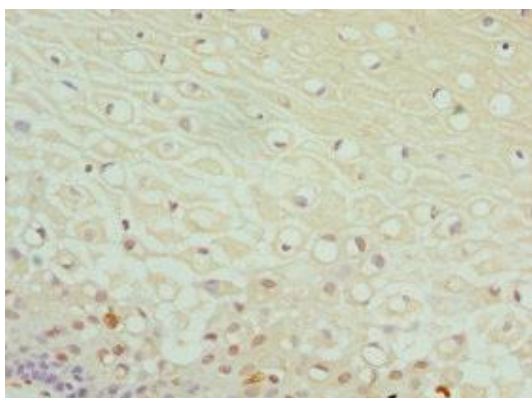
Product Images



Western blot. All lanes: DPP3 antibody at 1.39 μ g/ml + MCF-7 whole cell lysate. Secondary. Goat polyclonal to rabbit IgG at 1/10000 dilution. Predicted band size: 83, 36, 70, 80 kDa. Observed band size: 83 kDa.



Immunohistochemistry of paraffin-embedded human thyroid tissue using PACO44374 at dilution of 1:100.



Immunohistochemistry of paraffin-embedded human cervical cancer using PACO44374 at dilution of 1:100.