

PACO44348

---

## Product Information

**Size:**

50ul

**Reactivity:**

Human, Rat

**Source:**

Rabbit

**Isotype:**

IgG

**Applications:**

ELISA, WB, IHC

**Recommended dilutions:**

ELISA:1:2000-1:10000, WB:1:1000-1:5000,  
IHC:1:20-1:200

**Protein Background:**

Key enzyme in ketogenesis (ketone body formation). Terminal step in leucine catabolism. Ketone bodies (beta-hydroxybutyrate, acetoacetate and acetone) are essential as an alternative source of energy to glucose, as lipid precursors and as regulators of metabolism.

**Gene ID:**

HMGCL

**Uniprot**

P35914

**Synonyms:**

Hydroxymethylglutaryl-CoA lyase, mitochondrial (HL) (HMG-CoA lyase) (EC 4.1.3.4) (3-hydroxy-3-methylglutarate-CoA lyase), HMGCL

**Immunogen:**

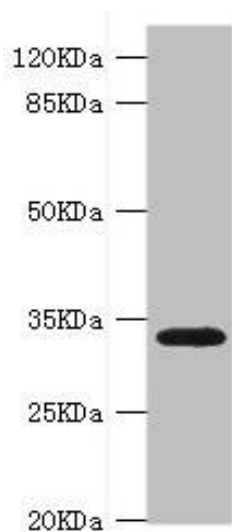
Recombinant Human Hydroxymethylglutaryl-CoA lyase, mitochondrial protein (1-325AA).

**Storage:**

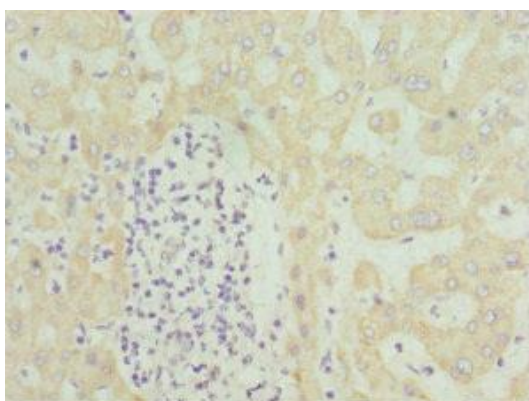
PBS with 0.02% sodium azide, 50% glycerol, pH7.3.

## Product Images

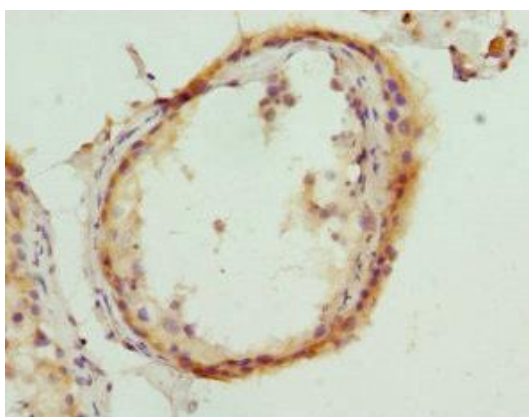
---



Western blot. All lanes: HMGL antibody at 0.8 $\mu$ g/ml + Rat liver tissue. Secondary. Goat polyclonal to rabbit IgG at 1/10000 dilution. Predicted band size: 35, 27, 21 kDa. Observed band size: 35 kDa.



Immunohistochemistry of paraffin-embedded human liver tissue using PACO44348 at dilution of 1:100.



Immunohistochemistry of paraffin-embedded human testis tissue using PACO44348 at dilution of 1:100.