

PACO44343

Product Information

Size:

50ul

Reactivity:

Human

Source:

Rabbit

Isotype:

IgG

Applications:

ELISA, IHC

Recommended dilutions:

ELISA:1:2000-1:10000, IHC:1:20-1:200

Protein Background:

The zeta chain is an alpha-type chain of mammalian embryonic hemoglobin.

Gene ID:

HBZ

Uniprot

P02008

Synonyms:

Hemoglobin subunit zeta (HBAZ) (Hemoglobin zeta chain) (Zeta-globin), HBZ, HBZ2

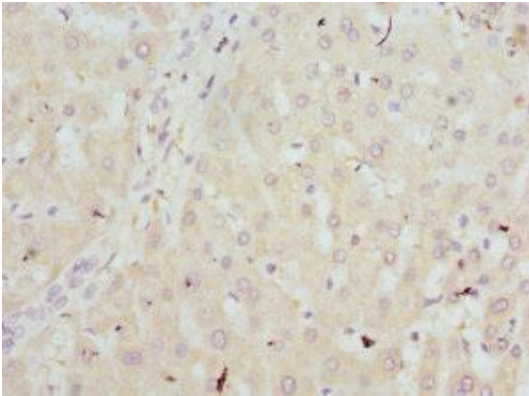
Immunogen:

Recombinant Human Hemoglobin subunit zeta protein (1-142AA).

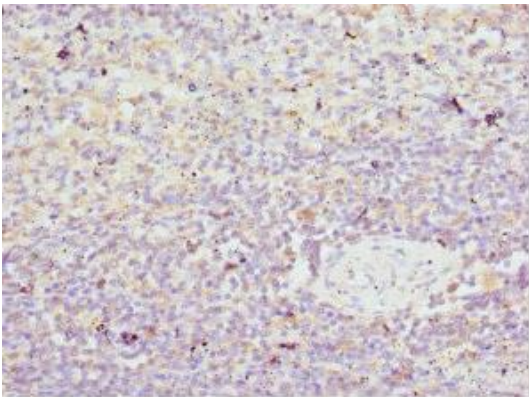
Storage:

PBS with 0.02% sodium azide, 50% glycerol, pH7.3.

Product Images



Immunohistochemistry of paraffin-embedded human liver tissue using PACO44343 at dilution of 1:100.



Immunohistochemistry of paraffin-embedded human spleen tissue using PACO44343 at dilution of 1:100.