

PACO44341

Product Information

Size:

50ul

Reactivity:

Human

Source:

Rabbit

Isotype:

IgG

Applications:

ELISA, IHC

Recommended dilutions:

ELISA:1:2000-1:10000, IHC:1:20-1:200

Protein Background:

mitochondrial inner membrane, calcium ion binding, glycerol-3-phosphate dehydrogenase activity, cellular lipid metabolic process.

Gene ID:

GPD2

Uniprot

P43304

Synonyms:

Glycerol-3-phosphate dehydrogenase, mitochondrial (GPD-M) (GPDH-M) (EC 1.1.5.3) (mtGPD), GPD2

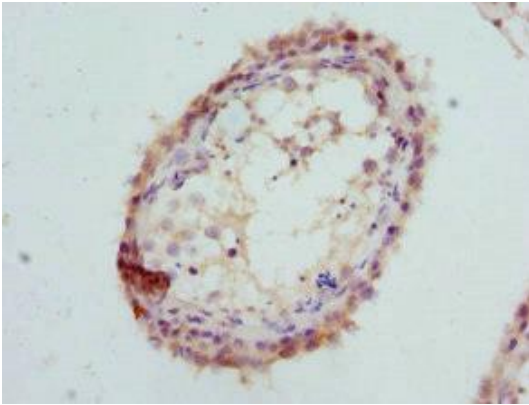
Immunogen:

Recombinant Human Glycerol-3-phosphate dehydrogenase, mitochondrial protein (25-325AA).

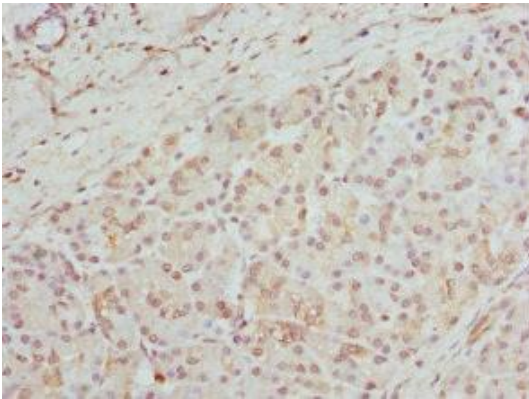
Storage:

PBS with 0.02% sodium azide, 50% glycerol, pH7.3.

Product Images



Immunohistochemistry of paraffin-embedded human testis tissue using PACO44341 at dilution of 1:100.



Immunohistochemistry of paraffin-embedded human pancreatic tissue using PACO44341 at dilution of 1:100.