

COCH Antibody



PACO44324

Product Information

Size:

50ul

Reactivity:

Human

Source:

Rabbit

Isotype:

IgG

Applications:

ELISA, WB

Recommended dilutions:

ELISA:1:2000-1:10000, WB:1:1000-1:5000

Protein Background:

Plays a role in the control of cell shape and motility in the trabecular meshwork.

Gene ID:

COCH

Uniprot

O43405

Synonyms:

Cochlin (COCH-5B2), COCH, COCH5B2

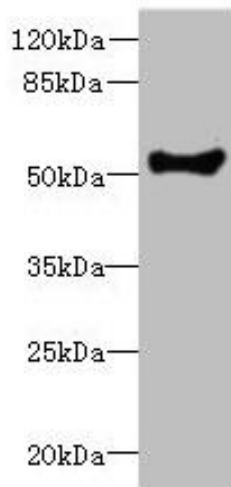
Immunogen:

Recombinant Human Cochlin protein (20-260AA).

Storage:

PBS with 0.02% sodium azide, 50% glycerol, pH7.3.

Product Images



Western blot. All lanes: COCH antibody at 1.73 μ g/ml + Human placenta tissue. Secondary. Goat polyclonal to rabbit IgG at 1/10000 dilution. Predicted band size: 60, 54 kDa. Observed band size: 54 kDa.